



## KITE SERIES

Outdoor: 6.4mm | 8mm | 10mm

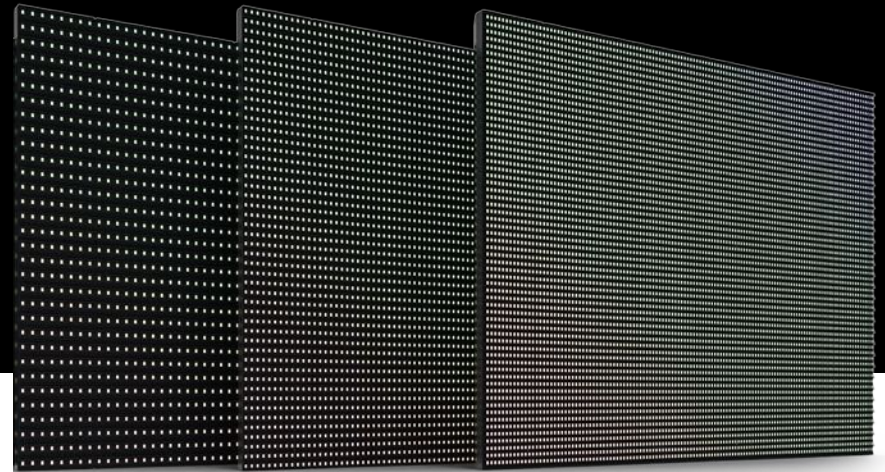
## **LED Module size:**

**320 x 320mm**

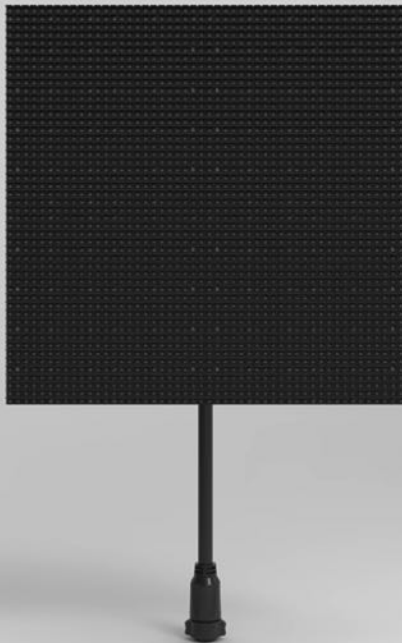
## **Aluminum panel size**

**960mm x 960mm**

**Or customized**



Pixel pitch: **6.4mm, 8mm, 10mm**



# LED Module

## *Plug and Play Design*

*No flat cables and no pins, integrate the power and signal as one cable and connector, it is super easy to install and remove the LED module units easily.*

## *IP66 for the module backside*

*Much better protection for the module unit, especially for the backside of module working in extreme condition*

## *Quick-Rotate Locking system*

*Modules can be take out from front and back*

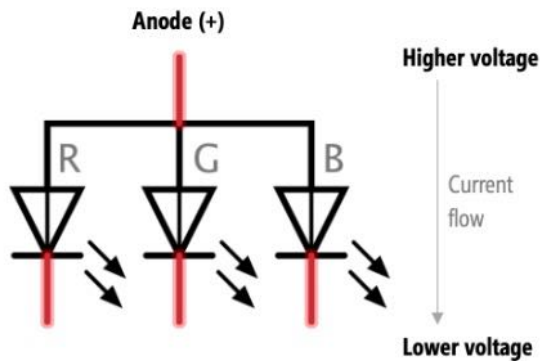
## *Breather valve*

*Optimized heating sinking for outdoor high temperature working*

# ECO

Common cathode energy-saving  
electronic design

## COMMON ANODE (+)



*Brightness: 6500 nits*

*Max power consumption: 520w/m2*

*Brightness: 7000 nits*

*Max power consumption: 590w/m2*

*Max power consumption: 379w/m2  
(With designated LED lamp)*

*Brightness: 10,000 nits*

*Max power consumption: 545w/m2  
(With designated LED lamp)*

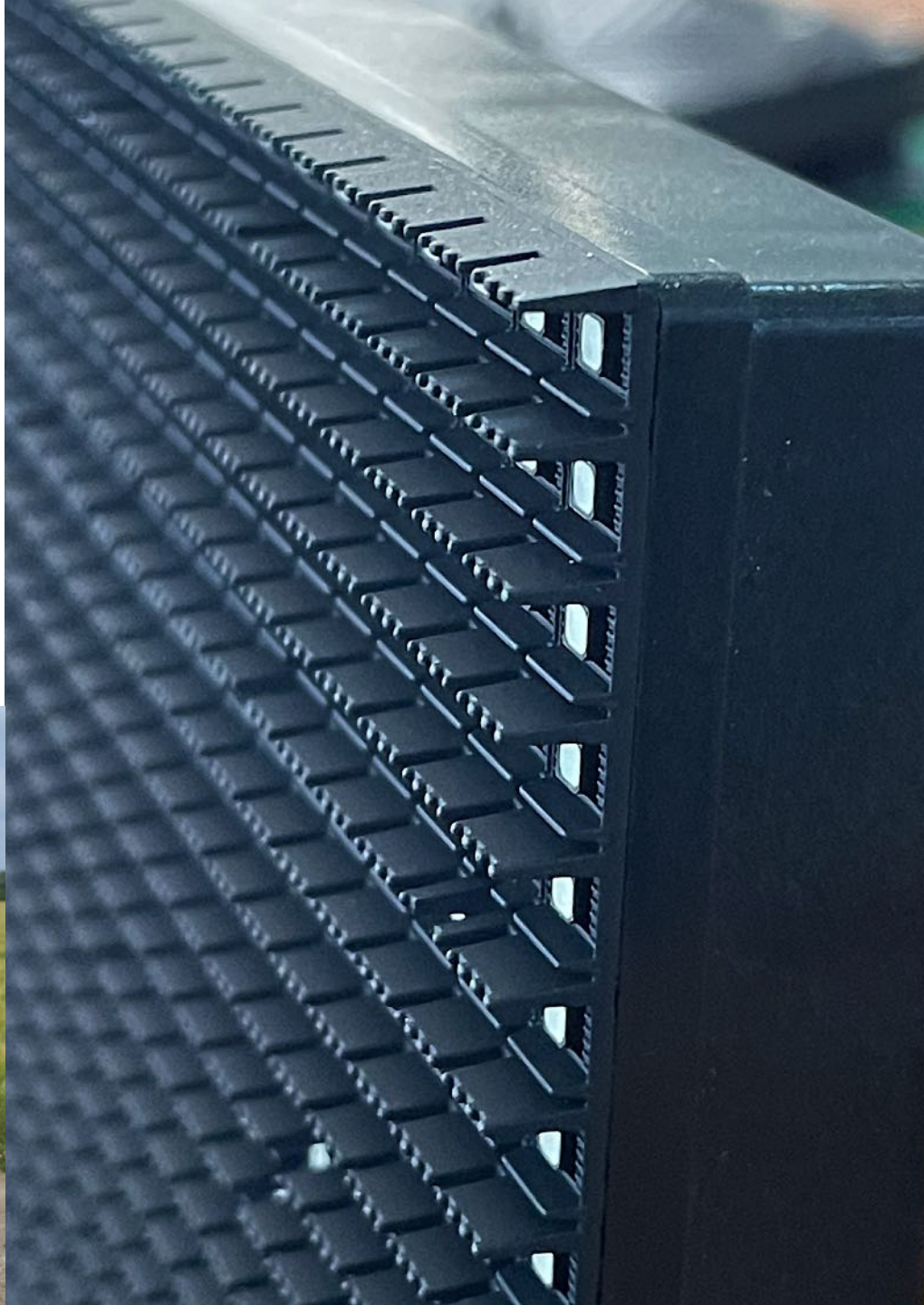
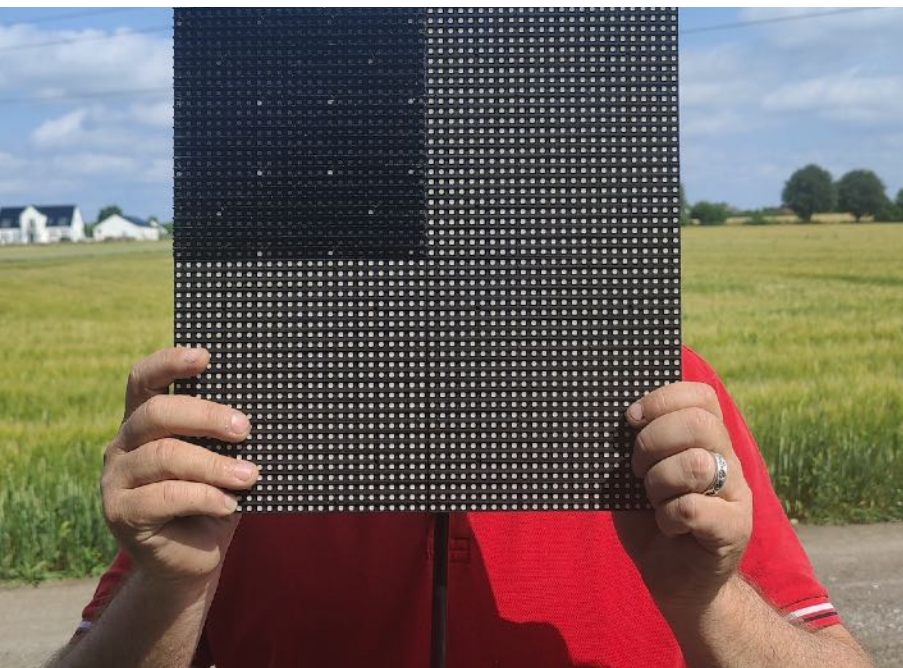


# High Louver mask

*Shield the direct sunlight*

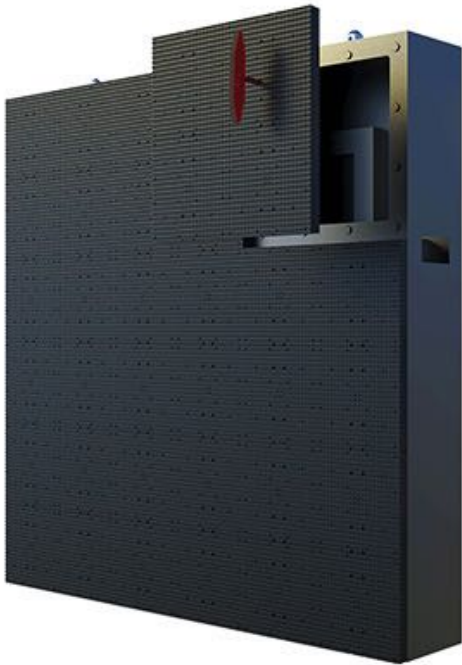
*50% higher contrast ratio*

*Clearly visible under direct sunshine*



# Modular mechanical design

*LED Module | Cabinet frame | Control power box*  
*Easy Installation & Maintenance*



# Reliable weather-proof

## for outdoor extreme conditions



### Reliability

IP65 front & back fit outdoor  
extreme conditions



### User-Friendly

Easy front and back  
maintenance design, less  
labor & maintenance cost



### Bright

Up to 10,000 nits brightness,  
3000:1 high contrast ratio,  
visible under sunshine



### ECO

Energy-saving electronic  
design

# Specification

Pixel pitch	6.4mm	8mm	10mm
LED Package	SMD2727	SMD2727	SMD2727
Brightness	6000-1,0000 nits	6000-1,0000 nits	6000 – 1,0000 nits
Viewing angle	140°/ 90°	140°/ 90°	140°/ 90°
Resolution	124,414/m2	15,625/m2	1,000/m2
Refresh rate	3840Hz	3840Hz	7680Hz
Frame rate	60Hz	60Hz	60Hz
Color temperature	3500K-12000K	3500K-12000K	3500K-12000K
Unit size	960mm x 960mm x 130mm (W x H x D)	3.15' x 3.15' x 0.43' (W x H x D)	
Unit weight	34kg / 75lbs	34kg / 75lbs	34kg / 75lbs
Input voltage	AC100~240V 50/60Hz	AC100~240V 50/60Hz	AC100~240V 50/60Hz
Power consumption (Avg)	100W/m <sup>2</sup>	216W/m <sup>2</sup>	216W/m <sup>2</sup>
Power consumption (Max)	520W/sqm(6000 nits)	590W/sqm(7000nits)	545W/sqm(10000 nits)
Working temperature	-10°C~40°C / 10%RH-90%RH	-10°C~40°C / 10%RH-90%RH	-10°C~40°C / 10%RH-90%RH
IP rating	IP65/IP54	IP65/IP54	IP65/IP54
Life span	100,000 hrs	100,000 hrs	100,000 hrs
Warranty	24 months	24 months	24 months



# Project Gallery





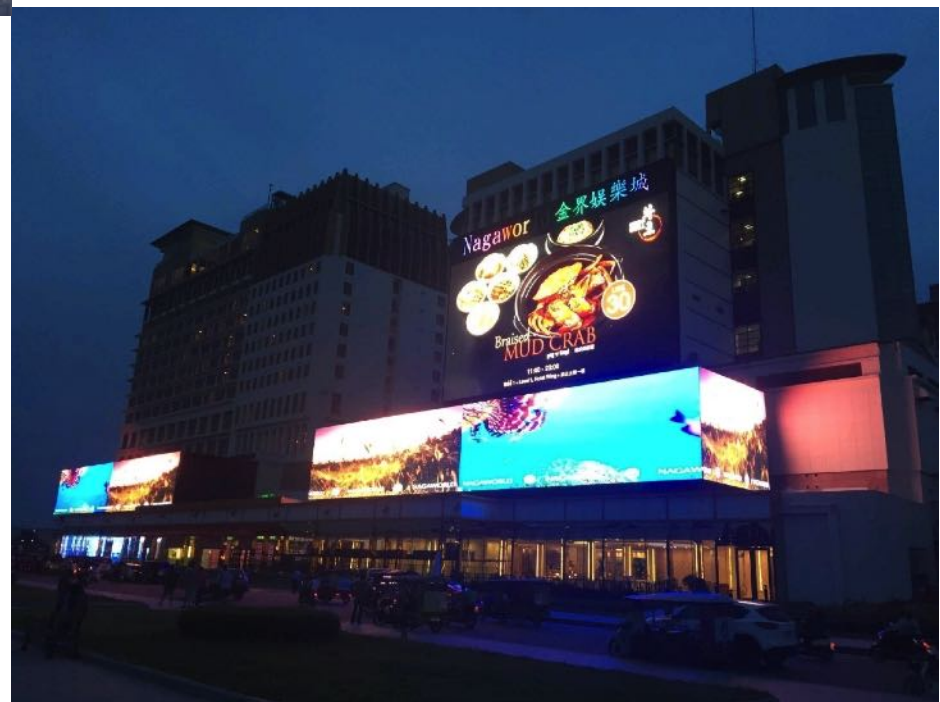
## Outdoor LED billboard

Outdoor LED billboard for advertising



## Outdoor Giant LED wall

Wall mounted outdoor LED wall with right angle







Modular design



High brightness



IP66 water-proof



Big viewing angle

160/140

3840Hz high refresh rate

12 bits grayscale



## High Brightness

7000- 10000 nits high brightness



## Front service

All LED modules & power supplies, full front maintenance



## IP66

Outdoor high protection, IP66, water-proof



## Noise Free

No fans & aircon system for the operation, noise free solution





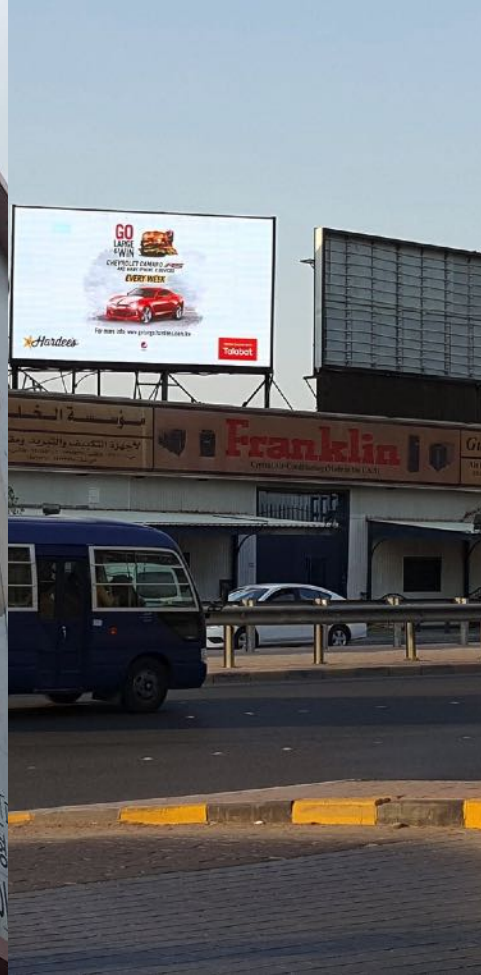




Wall mounted



Outdoor LED Sign



Roof Top



Creative  
installation



# LUCERE DISPLAYS Service

Customer' value is our top priority



## *Free inquiry with solutions*

*We will quote for any inquiry within 24 hours with quotations & specifications*



## *Free drawing*

*Free drawing of structure, signal & power cable connection, customized solutions if needed*



## *7/24 online technical support*

*Sales technical supports are ready anytime within warranty*

# Contact



*Locations*  
*Philadelphia / Nashville*



*Tel: 855 MYDISPLAY*  
*855 693 4775*



*Email: [info@luceredisplays.net](mailto:info@luceredisplays.net)*