



LUCERE DISPLAYS, LLC



Indoor Series

Indoor LED Wall & Module Installation

A High End Design Solution for any indoor applications



Multiformity

Cabinet & module installation optional



Creative Shape

Many creative shape for options



Full Range

From 1.8mm to 10mm indoor



Maintenance

Front & rear Maintenance is available

I Indoor Standard

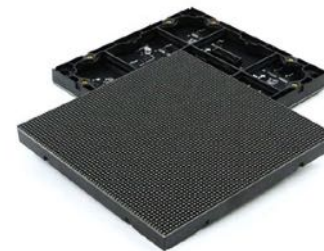
Full range of LED outdoor display pixel pitch ranges from 1.8mm to 10mm with different sizes to match different kinds of applications.



P1.8mm: 256mm x 128mm



P2mm: 256mm x 128mm



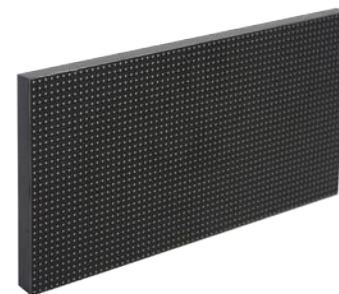
P2.5mm: 160mm x 160mm



P2.5mm: 320mm x 160mm



P3mm: 192mm x 192mm



P4mm: 256mm x 128mm



Indoor Standard



P5mm: 320mm x 160mm



P6mm: 192mm x 192mm



P8mm: 256mm x 128mm



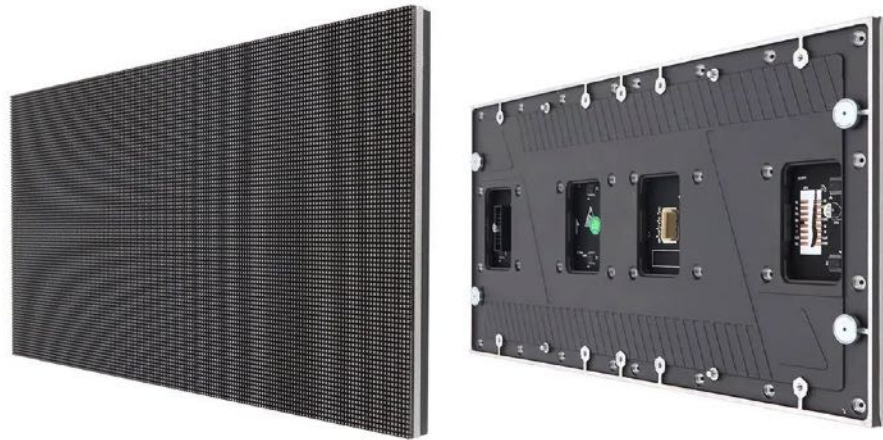
P10mm: 320mm x 160mm

Indoor Fine Pitch

Full HD, 4k, super high resolution LED display module solution

Pixel pitch: 1.25mm / 1.56mm / 1.875mm

Module size: 300mm x 168.75mm



Creative & Customized shapes



90 degree right angle



Concave & convex curve

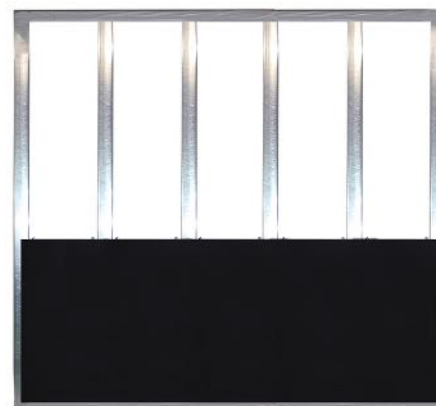
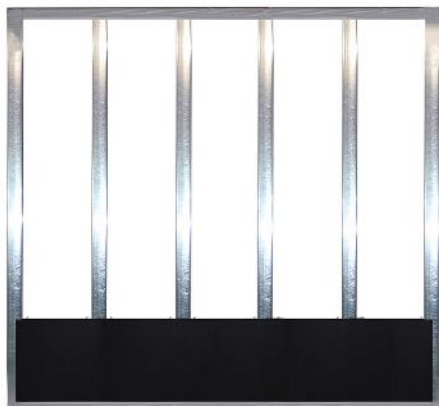
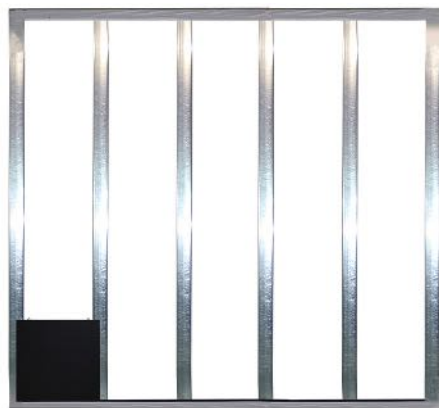
Magnetic Front Service

Wall mounted, 100% front service

LED module
Receiving card
Cable
Power supply



LED module + Easy frame Installation



No soldering needed Splicing frame

No soldering needed

100% full front service

Flexible installation for any dimension

Precise alignment

Heat sinking design



Indoor Series

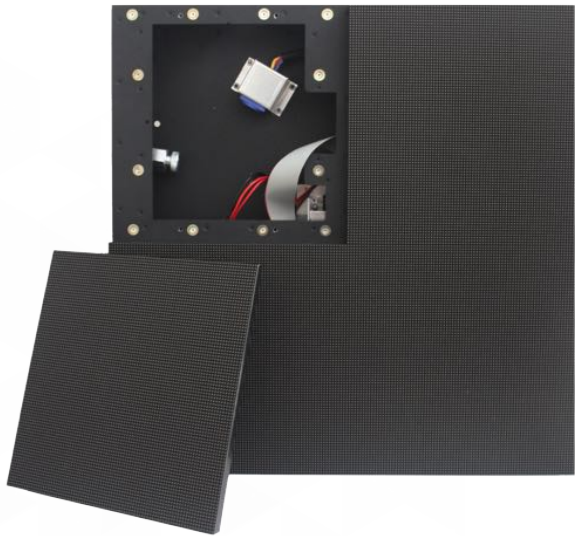
Specification

Pixel pitch	1.8mm	2mm	2.5mm	3mm	4mm
LED configuration	SMD1515	SMD2020	SMD2020	SMD2020	SMD2020
Brightness	700nits	900 nits	1000 nits	1000 nits	1000nits
Viewing angle	160°/ 160° (50% brightness)				
Scan mode	1/32	1/32	1/32	1/16	1/16
Refresh rate	1920/3840Hz				
Processing	14 bits				
Module size(mm)	256 x 128	256x 128	160x160/320x160	192x192	256x128
Cabinet size(mm)	512 x 512	512 x 512	480x480/640x480	576x576	512x512
Input voltage	AC100~240V 50/60 HZ				
Power consumption (Avg)	200W/sqm	250W/sqm	250W/sqm	250W/sq	200W/sqm
Power consumption (Max)	600W/sqm	600W/sqm	600W/sqm	600W/sqm	500W/sqm
Working temperature	-20°C~60°C				
IP rating	IP31/IP31				
Life span	100,000 hrs				
Warranty	24 months				

Specification

Pixel pitch	5mm	6mm	8mm	10mm
LED configuration	SMD2020	SMD2020	SMD3528	SMD3528
Brightness	800nits	800 nits	800 nits	800nits
Viewing angle	160°/ 160° (50% brightness)			
Scan mode	1/16	1/16	1/4	1/4
Refresh rate	1920/3840Hz			
Processing	14 bits			
Module size(mm)	320 x 160	192 x 192	256x128	320x160
Input voltage	AC100~240V 50/60 HZ			
Power consumption (Avg)	200W/sqm	220W/sqm	200W/sqm	200W/sqm
Power consumption (Max)	600W/sqm	600W/sqm	600W/sqm	500W/sqm
Working temperature	-20°C~60°C			
IP rating	IP31/IP31			
Life span	100,000 hrs			
Warranty	24 months			

Iron cabinet frame



Aluminum / magnesium cabinet frame





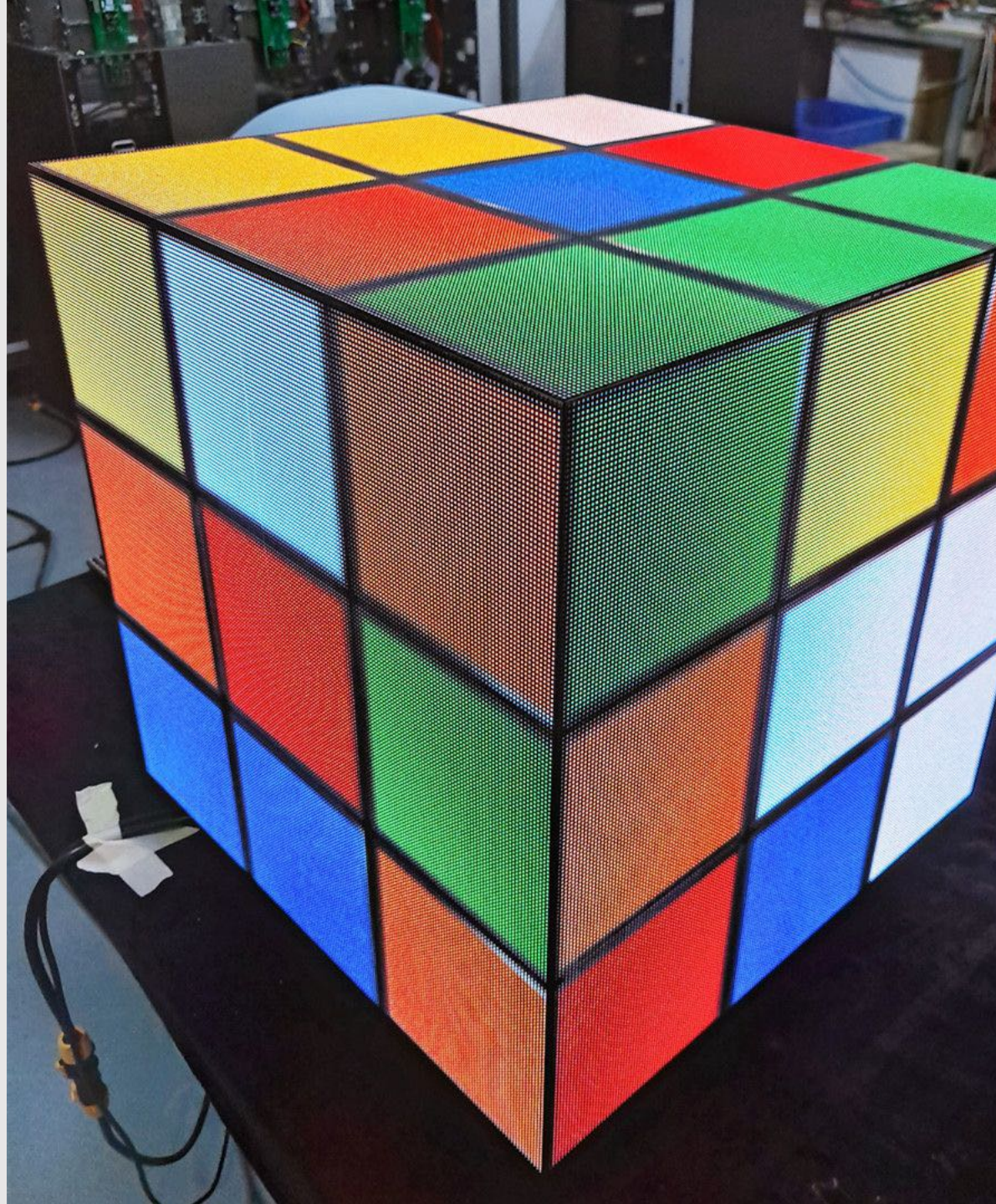
Module Installation

Installation without cabinets, with magnet on the structures, connect with cabinet, Rec card & PSU.



Creative Solution

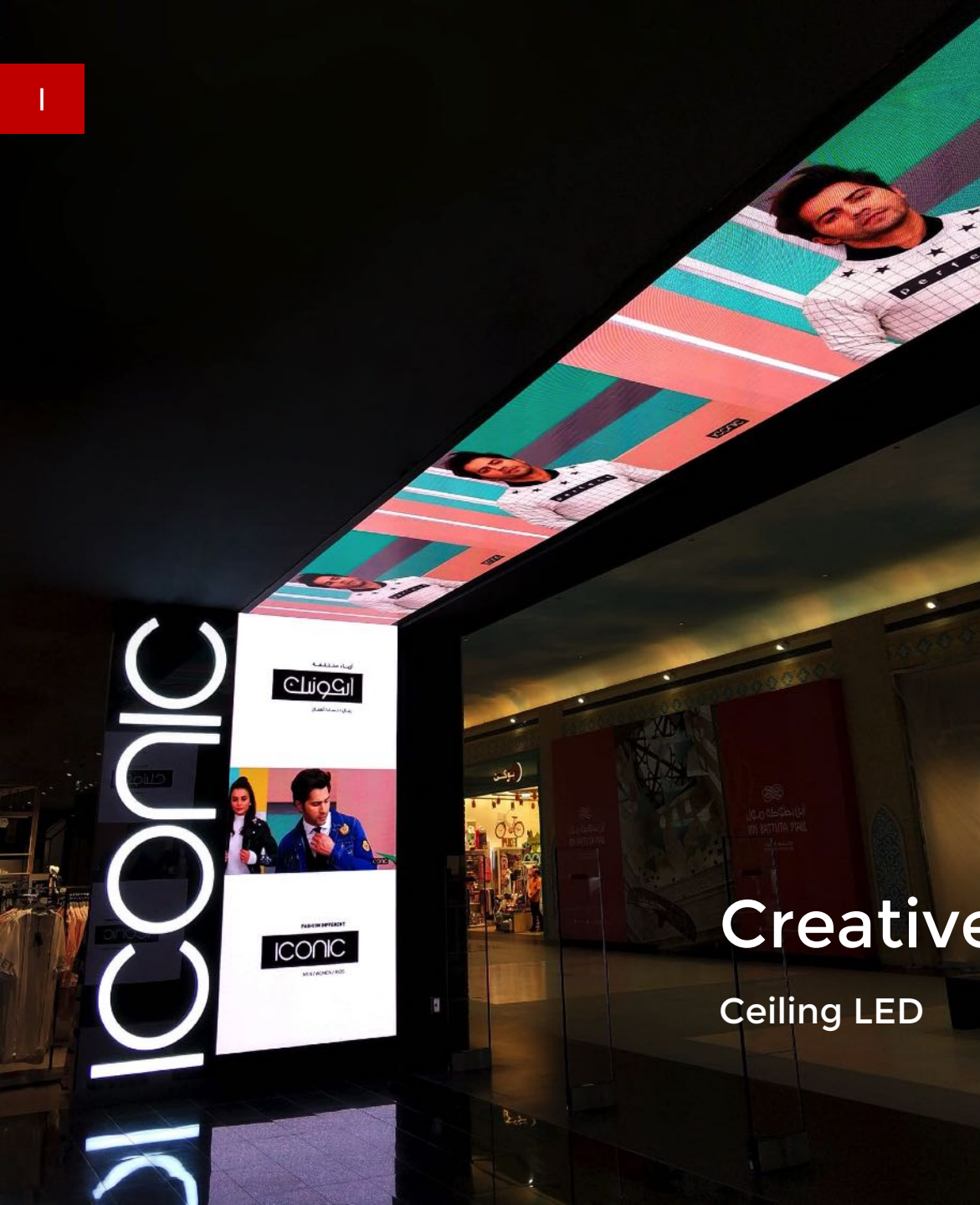
Cube Shape





Creative Solution

Customized sizes / shapes



Creative Solution

Ceiling LED

Creative Solution

Pilliar Sharp





Project Gallery

U.A.E, 2020





U.A.E, 2019



U.A.E, 2019



Korea , 2020

LUCERE DISPLAYS Service

Customer' value is our top priority



Free inquiry with solutions

We will quote for any inquiry within 24 hours with quotations & specifications



Free drawing

Free drawing of structure, signal & power cable connection, customized solutions if needed



7/24 online technical support

Sales technical supports are ready anytime within warranty

Contact



Locations

*Philadelphia / Las Vegas / Nashville / Phoenix / Atlanta /
Orlando / Dallas*



Tel: 855 MYDISPLAY

855 693 4775



Email: info@luceredisplays.net