



LUCERE DISPLAYS, LLC



LED Poster

New Generation Versatile LED Poster Display

1.75mm / 2mm / 2.5mm / Indoor & outdoor



▶ Ultra-slim & Lightweight Design

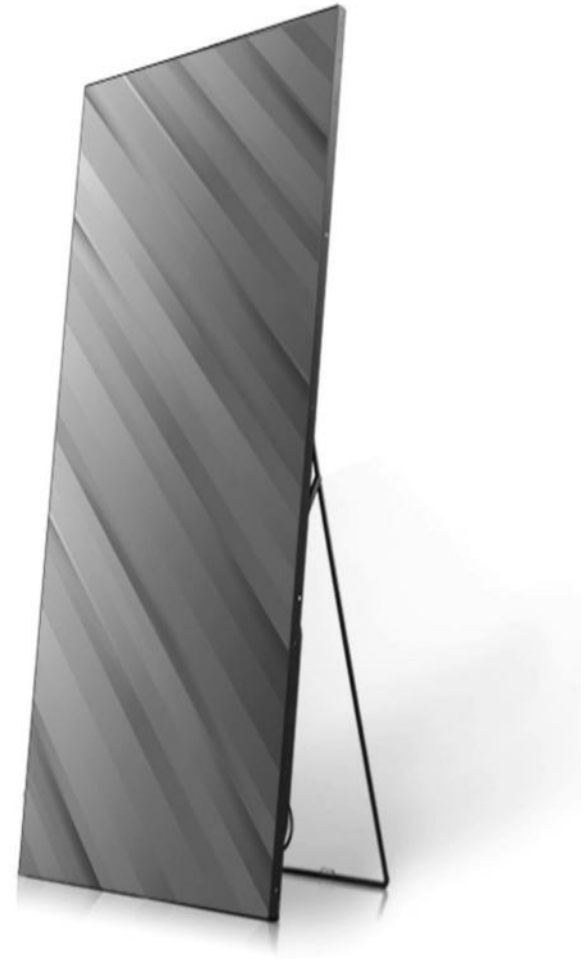
The new generation is specially designed for lightweight, and slim for the ease of portability.

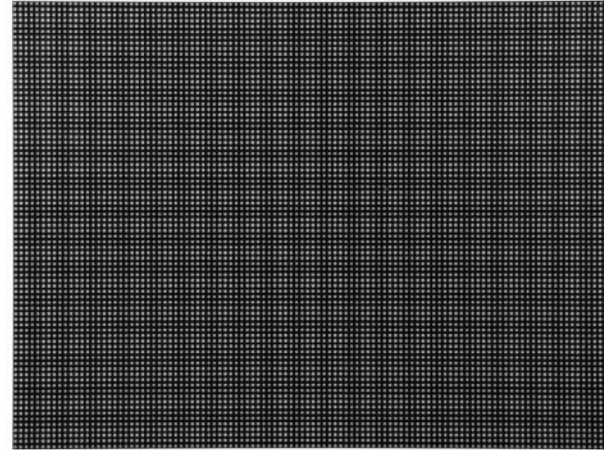
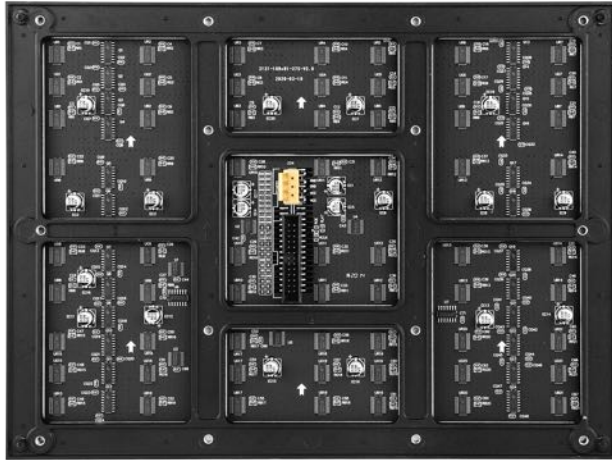
Easy move and packed, Fits limit space application.

One Person Job, Easy Transport.

▶ **Excellent Visual Display**

Thanks to the die-casting LED module housing, the LED Poster provides perfect flatness and seamless alignment without any lines, high resolution of 1.75/2.5mm, 3840 high refresh rate brings vivid visual experiences for advertising.





► Die-casting LED module housing

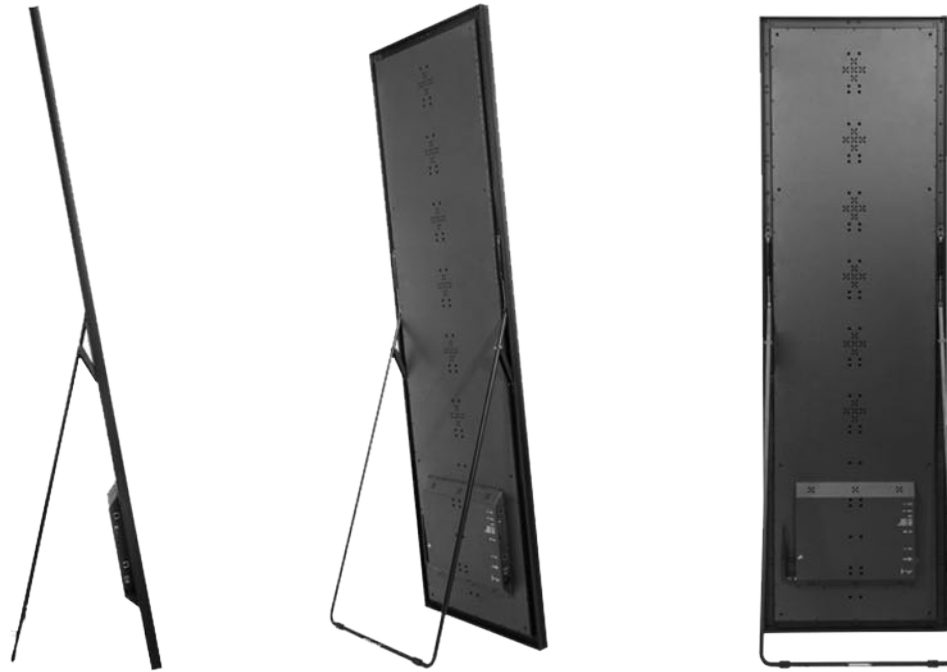
Patent-design housing for the LED module for perfect alignment and flatness



► **Acrylic cover protection available**

Optional transparent acrylic cover for indoor use protection





► Adjustable Back Bracket

Equipped with adjustable back bracket, Viewing angle can be adjusted anytime, anywhere, allowing more audience to reach the content easily. Back Bracket can be folded together with the main frame as one unit easily for packing if needed.



► Unique Base-Standing Bracket

Base-standing bracket makes the LED poster stand on ground stably. The bracket is movable with 4 wheels, which makes the poster rotate freely, and allows freedom of movement in all directions.



► Smart Cloud Management

Synchronous & Asynchronous control available. Contents can be updated via mobile, ipad, or notebook.

Real-time Play, Cross-platform Publish, and USB or WIFI.

Support operation by IOS or Android devices.

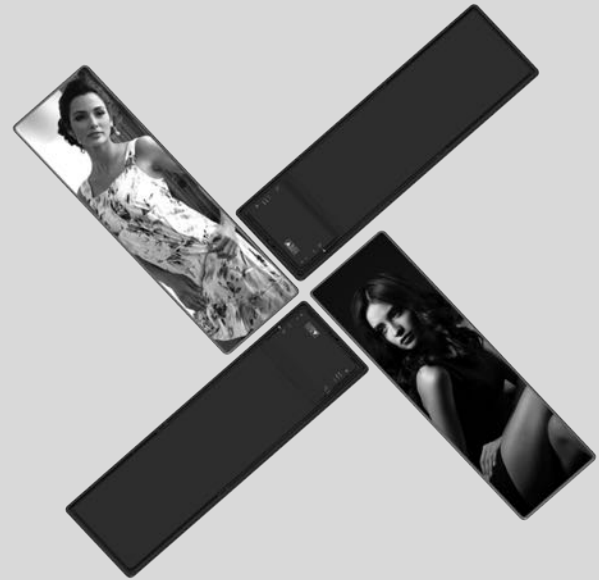
Support Built-in media player for storage



▶ Flexible Installation ways



► Creative Installation ways



► Cascade Display

The LED poster can show one complete video / image



► Cascade Display

The LED poster can show one complete video / image



Specification (Indoor)

Pixel pitch	1.75mm	2mm	2.5mm
LED configuration	SMD1515	SMD2121	SMD2121
Brightness	1000 nits		
Viewing angle	160°/ 160° (50% brightness)		
Scan mode	1/32	1/32	1/27
Refresh rate	3840Hz		
Processing	16 bits		
Module size	280mm x 210mm	280mm x 210mm	320x160mm
Display size	560mm x 1890mm x 35mm (W x H x D)		
Panel size	572mm x 1902mm x 35mm (W x H x D)		
Panel weight	27kg		
Input voltage	AC100~240V 50/60 HZ		
Power consumption (Avg)	150W/sqm	195W/sqm	120W/sqm
Power consumption (Max)	500W/sqm	650W/sqm	400W/sqm
Working temperature	-20°C~60°C		
IP rating	IP40/IP40		
Life span	100,000 hrs		
Warranty	24 months		

Specification(Outdoor)

Pixel pitch	2.5mm
LED configuration	SMD1515
Brightness	6500 nits
Viewing angle	160°/ 160° (50% brightness)
Scan mode	1/20
Refresh rate	3840Hz
Processing	16 bits
Module size	200 x 200mm
Display size	512mm x 1672mm x 63mm (W x H x D)
Panel size	612mm x 2072mm x 63mm (W x H x D)
Panel weight	42kg
Input voltage	AC100~240V 50/60 HZ
Power consumption (Avg)	240W/sqm
Power consumption (Max)	800W/sqm
Working temperature	-20°C~60°C
IP rating	IP65
Life span	100,000 hrs
Warranty	24 months

LUCERE DISPLAYS Service

Customer' value is our top priority



Free inquiry with solutions

We will quote for any inquiry within 24 hours with quotations & specifications



Free drawing

Free drawing of structure, signal & power cable connection, customized solutions if needed



7/24 online technical support

Sales technical supports are ready anytime within warranty

Contact



Locations
Philadelphia / Nashville



Tel: 855 MYDISPLAY
855 693 4775



Email: info@luceredisplays.net