



# Square SERIES

Outdoor Permanent installation

3.9mm | 4.8mm | 6.2mm | 7.8mm | 10.4mm

# Reliable weather-proof

for outdoor extreme conditions



## Reliability

IP65 front & back fit outdoor extreme conditions



## User-Friendly

Easy front and back maintenance design, less labor & maintenance cost



## Bright

Up to 10,000 nits brightness, 3000:1 high contrast ratio, visible under sunshine



## ECO

Energy-saving electronic design

**Cabinet size: 1 x 1m, 3.28ft x 3.28ft**  
**one cabinet - one square meter**



# Numbers



Up to 10000 nits

## Brightness

Brightness from 7000 -10,000 nits  
Depend on the LED lamp chosen



IP65

## IP Rating

High protection level, weather-proof  
Higher than the traditional IP65



3 years

## Warranty

Thanks to the high protection design,  
all Vast series are giving 3 years warranty

# Specification

Pixel pitch	3.9mm	4.8mm	6.25mm	7.8mm	10.4mm
LED configuration	SMD1921	SMD1921	SMD2727	SMD2727	SMD2727
Brightness	5000 nits	5000 nits	6500 nits	6500 nits	6500nits
Viewing angle	120°/ 120° (50% brightness)				
Contrast ratio	5000: 1				
Refresh rate	1920/3840Hz				
Processing	14 bits				
Cabinet size(mm)	1000 x 1000mm / 500 x 1000 mm				
Input voltage	AC100~240V 50/60 HZ				
Power consumption (Max)	800W/sqm	800W/sqm	720W/sqm	650W/sqm	650W/sqm
Power consumption (Avg)	265W/sqm	265W/sqm	240W/sqm	220W/sq	220W/sqm
Working temperature	-20°C~60°C				
IP rating	IP65/IP65				
Life span	100,000 hrs				
Warranty	36 months				



## LED Module

Dual power supply and pin interface design  
hidden optional

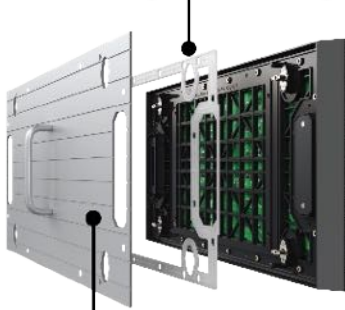
Land right modules interchangeable use

45° angle design to form 90 degree right  
angle shape

Aluminum back shell and aluminum power  
box for heat dissipation, which has high thermal  
conductivity and good heat dissipation,

ensuring long-term stable operation of the screen.

sealing rubber ring



Aluminum alloy cooling back plate

# Modular mechanical design

LED Module | Cabinet frame | Control power box

Easy Installation & Maintenance





# ECO

Common cathode energy-saving electronic design





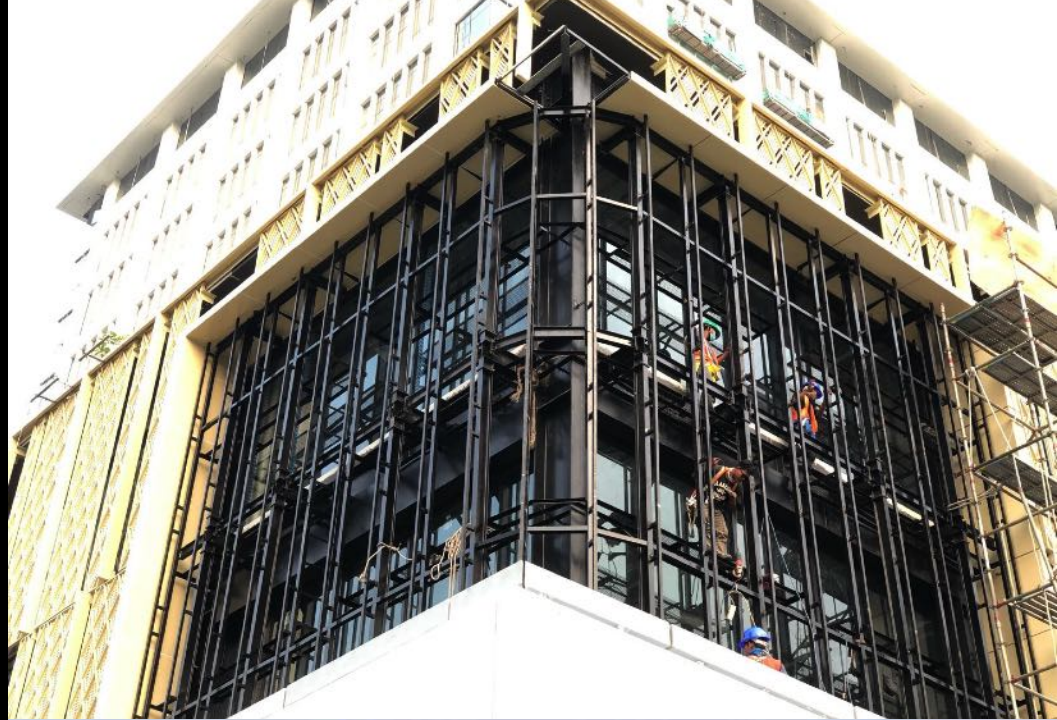
# Creative solution

90 degree right angle



# 3D LED billboard

Curve shape | Outdoor

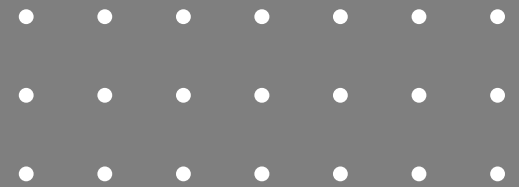




# Project Gallery

Projects has been done with VAST Series from 2019 – 2021

Locations: Middle East, North America, Asia, Europe etc





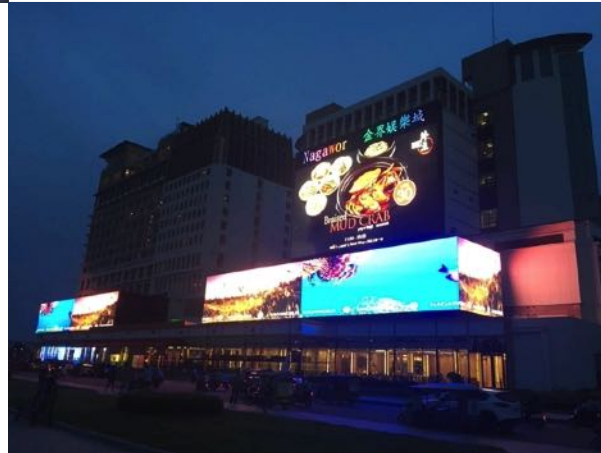
## Outdoor LED billboard

Outdoor LED billboard for advertising



## Outdoor Giant LED wall

Wall mounted outdoor LED wall with right angle





Modular design



High brightness



IP66 water-proof



Big viewing angle

160/140



3840Hz high refresh rate



12 bits grayscale



### High Brightness

7000-10000 nits high brightness



### Front service

All LED modules & power supplies, full front maintenance



### IP66

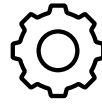
Outdoor high protection, IP66, water-proof



### Noise Free

No fans & aircon system for the operation, noise free solution





## Multiple installation

Roof top installation, wall mounted installation,  
pillar installations are all available



## Energy-saving

With common cathode technology saving 30% +  
power consumption



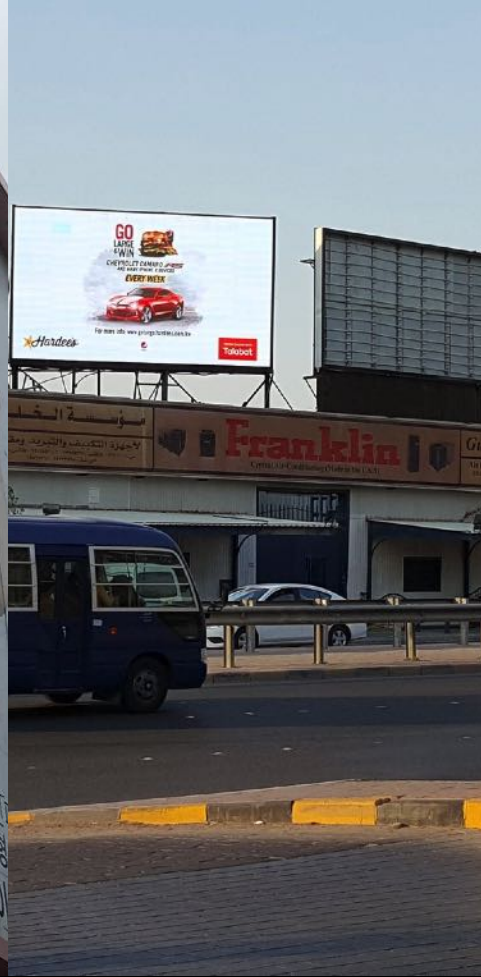




Wall mounted



Outdoor LED Sign



Roof Top



Creative installation

# LUCERE DISPLAYS

## Service

Customer' value is our top priority



### *Free inquiry with solutions*

*We will quote for any inquiry within 24 hours with quotations & specifications*



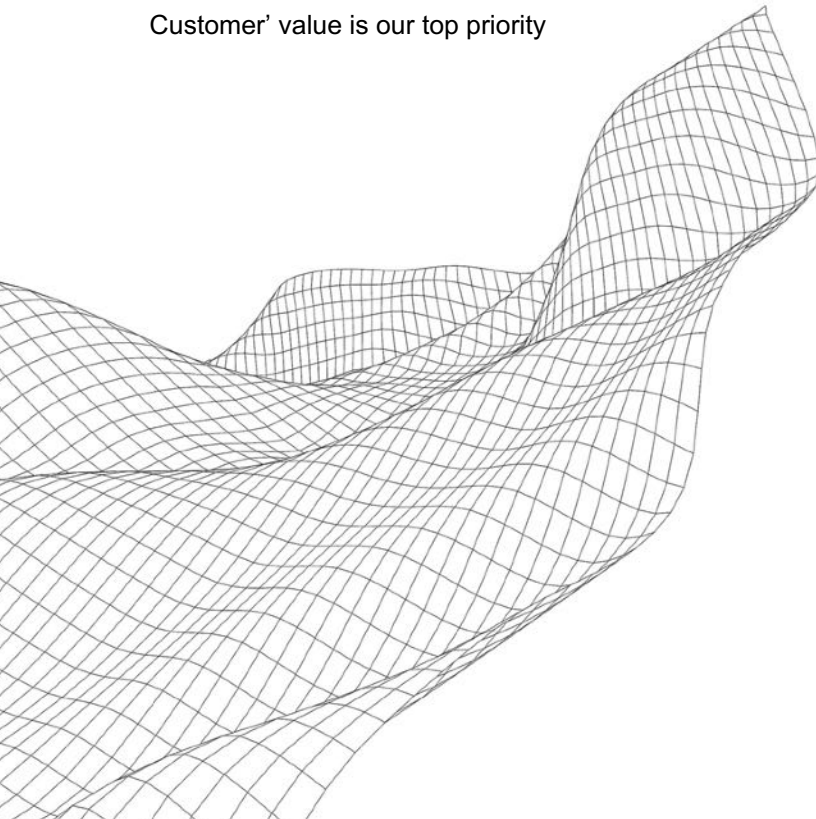
### *Free drawing*

*Free drawing of structure, signal & power cable connection, customized solutions if needed*



### *7/24 online technical support*

*Sales technical supports are ready anytime within warranty*



# Contact



## *Locations*

*Philadelphia / Las Vegas / Nashville / Phoenix / Atlanta /  
Orlando / Dallas*



*Tel: 855 MYDISPLAY*

*855 693 4775*



*Email: [info@luceredisplays.net](mailto:info@luceredisplays.net)*