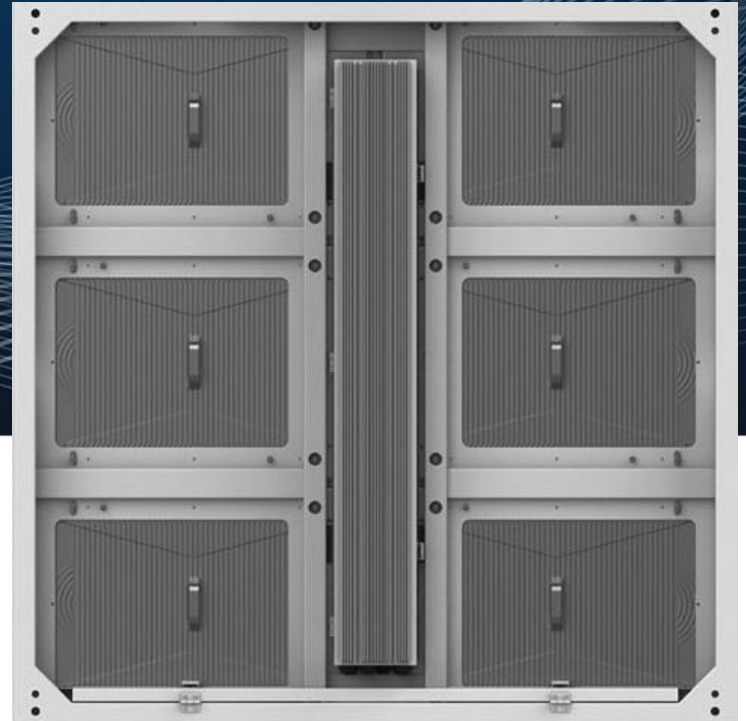


## VAST SERIES

5mm | 6.67mm | 8mm | 10mm



# IP66 solution

for outdoor extreme conditions



## Reliability

IP66 high IP Rating to fit outdoor extreme conditions

## User-Friendly

Easy front and back maintenance design, less labor & maintenance cost

## Bright

Up to 10,000 nits brightness, 3000:1 high contrast ratio, visible under sunshine

## Eco

Energy-saving electronic design

# Features

1. *Reliability*
2. *User-friendly*
3. *Eco-design*
4. *Creative design*
5. *Specification*
6. *Applications*



V A S T series

# Numbers

10000 nits

IP66

3 years

## *Brightness*

*Brightness from 7000 -10,000 nits  
Depend on the LED lamp chosen*

## *IP Rating*

*High protection level, weather-proof  
Higher than the traditional IP65*

## *Warranty*


*Thanks to the high protection design,  
all Vast series are giving 3 years  
warranty*

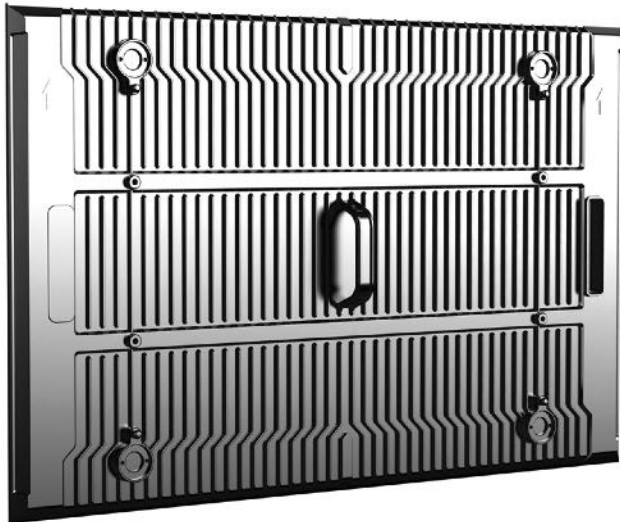
# Reliability

## Strong Flame Resistance:

Aluminum material, high temperature durability, fast heat-dissipation.

The whole product can Reach 5VB fireproofing level.

Flame Retardant Grade		After 10 seconds burn tests on the sample	How many seconds will the flame be extinguished?	Can the drop particles ignite cotton?
5VB		5 times	60 seconds	Yes
V-0		2 times	30 seconds	No
V-1		2 times	60 seconds	No
V-2		2 times	60 seconds	No
HB		For samples 3-13 mm thickness, the combustion rate $\leq$ 40mm / min; Samples $\leq$ 3mm thickness, burning speed $\leq$ 70mm / min		



## IP66 IP Rating

*Full sealed die-casting aluminum module chassis*

*Water proof connectors(between modules)*

*Drain hole is designed at the bottom of the panel to prevent ponding*

*High standard of Waterproofing*

*Can be immersed in the specified water pressure for a long time*

# Smart Designs

## ***Cable-less design***

*Power and data cables are hidden at the bottom of the panel*

## ***Hard Connection***

*BTB connector replace data and power cables, high stability*

## ***Multiple size***

*Available: 960\*1280/960\*960/960\*640/1440\*1280/ 1440\*960mm*

## ***Customized design***

*Curve shape & 90 degree edge available*

## ***Noise Free***

*No fans needed for the working*



# Light weigh

*24kg / aluminum cabinet  
35kg / Iron cabinet*

*Thickness:75mm*

# Cables less

*Connection cables all hiding  
in a smart way*







**ECO**

*Common cathode  
Energy-saving electronic design*



# Power consumption calculation

---

*Power Saving*

*Vast P10  
7000 nits*

*Normal P10  
6000 nits*

*Time / Screen Size*

*Average 150W / SQM*

*Average 300W / SQM*

*1 DAY \* 100 SQM*

*360(KW.h)*

*1 YEAR \* 100 SQM*

*100,000(KW.h)*

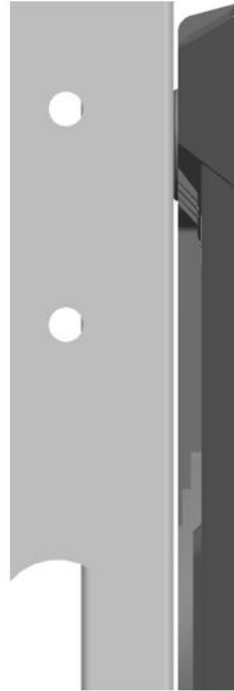
*3 YEARS \* 100 SQM*

*300,000(KW.h)*

*5 YEARS \* 100 SQM*

*500,000(KW.h)*

**Cabinet  
Frame**



**LED  
Module**



## **Ventilation System**

*Heat dissipation gap  
between the module and the cabinet,  
better heat dissipation*

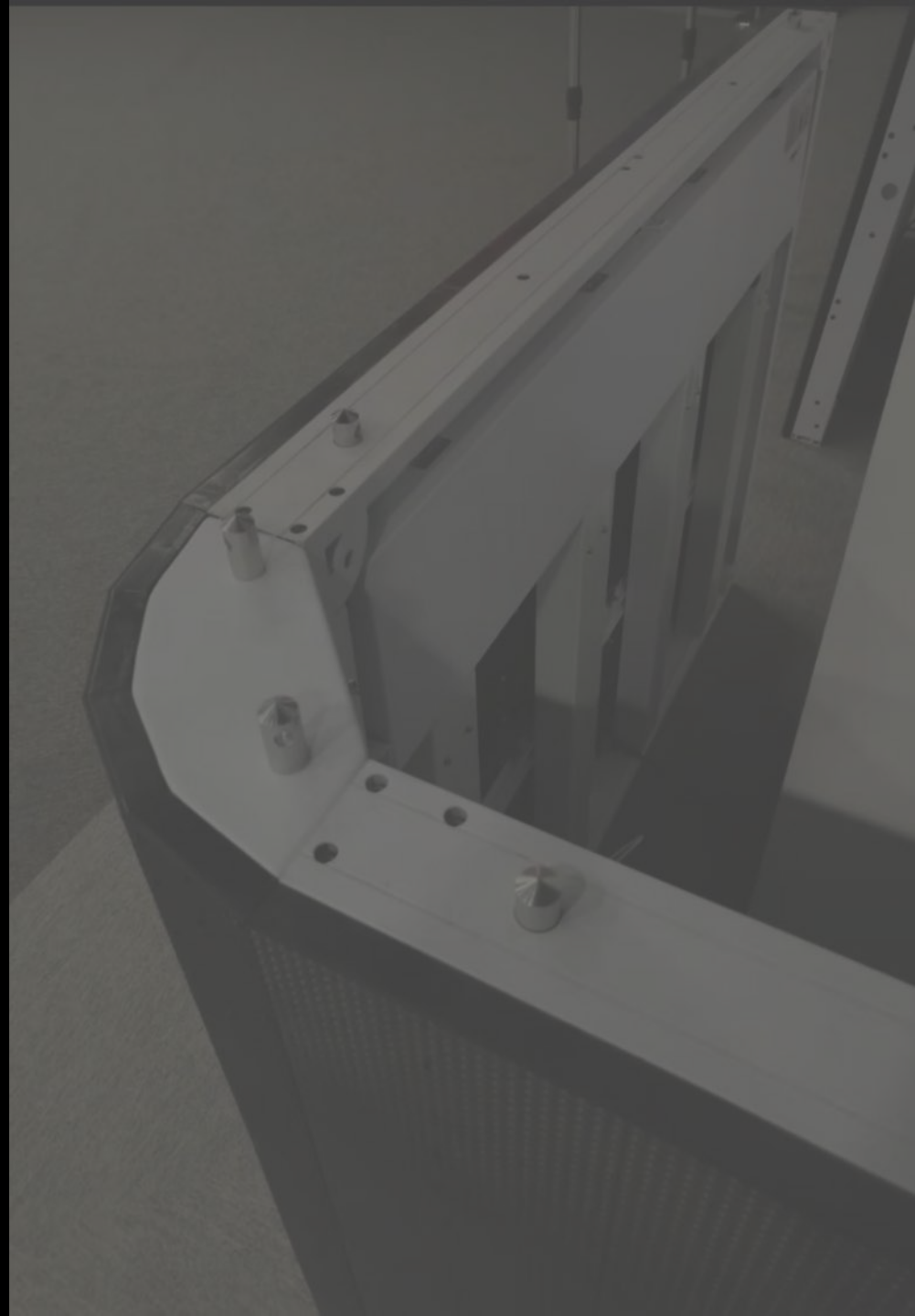
## ***Natural cooling system***

*0.43sqm for each module  
0.24sqm for each power supply box*

# Creative Shape

Curve corner

Seamless curve



# Creative Shape

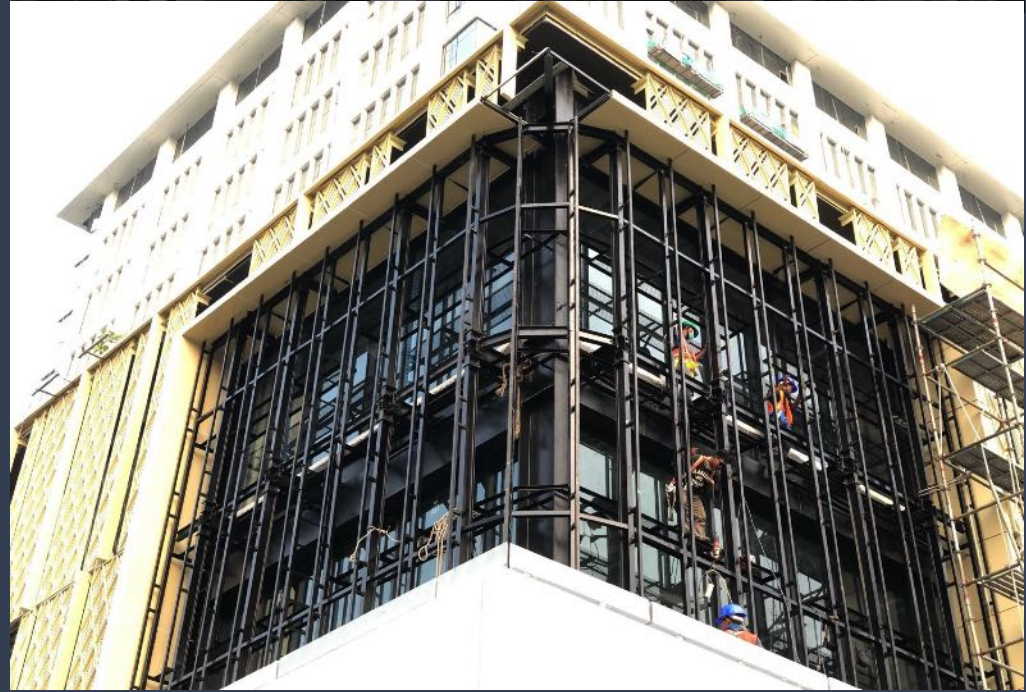
90 degrees

Right angle



# 3D LED billboard

Curve shape | Outdoor



# Specification

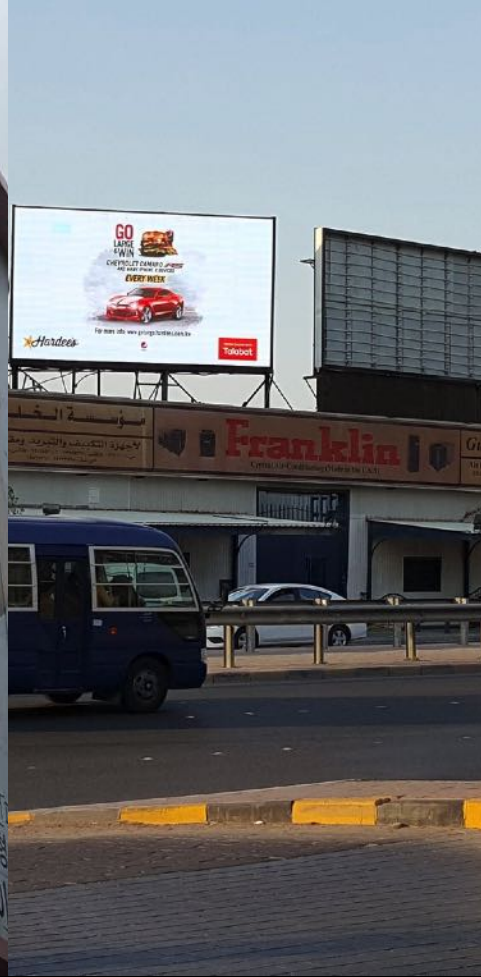
Pixel pitch	5mm	6.67mm	8mm	10mm
LED Package	SMD1921	SMD2727	SMD2727	SMD2727
Brightness	5500 nits	6500/10000 nits	6500/10000 nits	6500/10000 nits
Viewing angle	140°/ 240°	140°/ 120°	140°/ 120°	140°/ 120°
Resolution	40,000/m2	2,2500/m2	15,625/m2	10,000/m2
Refresh rate	3840Hz	3840Hz	3840Hz	3840Hz
Module size	480mm x 320mm(W x H)		18.90" x 12.6" (W x H )	
Panel size	960 x 960m x 70mm (W x H x D)		3.15" x 3.15" x 0.23' (W x H x D)	
Unit weight	24kg / 53lbs	24kg / 53lbs	24kg / 53lbs	24kg / 53lbs
Input voltage	AC100~240V 50/60	AC100~240V 50/60Hz	AC100~240V 50/60Hz	AC100~240V 50/60Hz
Power consumption (Avg)	200w/m2	200w/m2	200w/m2	200w/m2
Power consumption (Max)	600/m2.	600w/m2	600/m2	600w/m2
Working temperature	-10°C~40°C / 10%RH-90% -10°C~40°C / 10%RH-90%RH -10°C~40°C / 10%RH-90%RH			
IP rating	IP66	IP66	IP66	IP66
Life span	100,000 hrs	100,000 hrs	100,000 hrs	100,000 hrs
Warranty	36 months	36 months	36 months	36 months



Wall mounted



Outdoor LED Sign



Roof Top



Creative





**Modular design**



**High brightness**



**IP66 water-proof**



## Creative Shape LED Wall

*Outdoor LED billboard for advertising*



## Outdoor Giant LED Wall

*Wall mounted outdoor LED wall with  
right angle*





Big viewing angle

160/140



3840Hz high refresh rate



12 bits grayscale

# LUCERE DISPLAYS

## Service

Customer' value is our top priority



### *Free inquiry with solutions*

*We will quote for any inquiry within 24 hours with quotations & specifications*



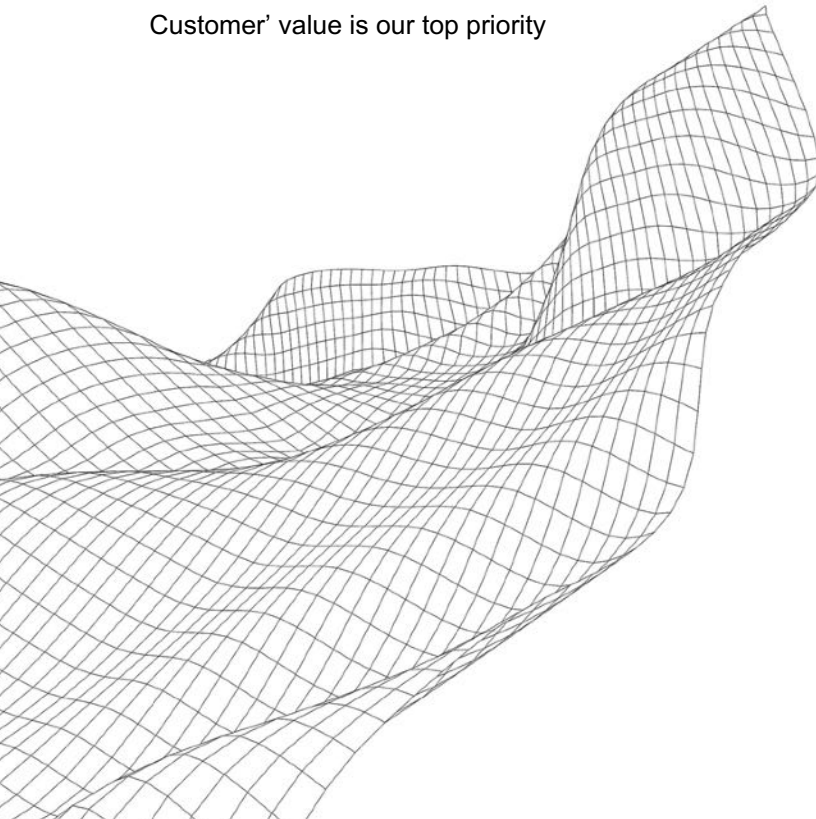
### *Free drawing*

*Free drawing of structure, signal & power cable connection, customized solutions if needed*



### *7/24 online technical support*

*Sales technical supports are ready anytime within warranty*



# Contact



## *Locations*

*Philadelphia / Las Vegas / Nashville / Phoenix / Atlanta /  
Orlando / Dallas*



*Tel: 855 MY DISPLAY  
855 693 4775*



*Email: [info@luceredisplays.net](mailto:info@luceredisplays.net)*