



LUCERE DISPLAYS, LLC



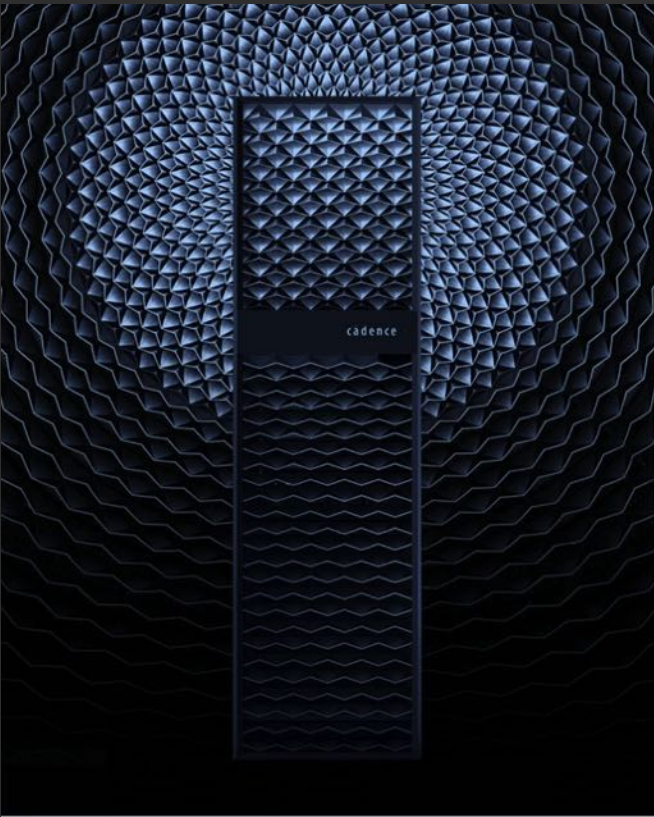
MATRIX SERIES

2.6mm 2.9mm 3.9mm 4.8mm

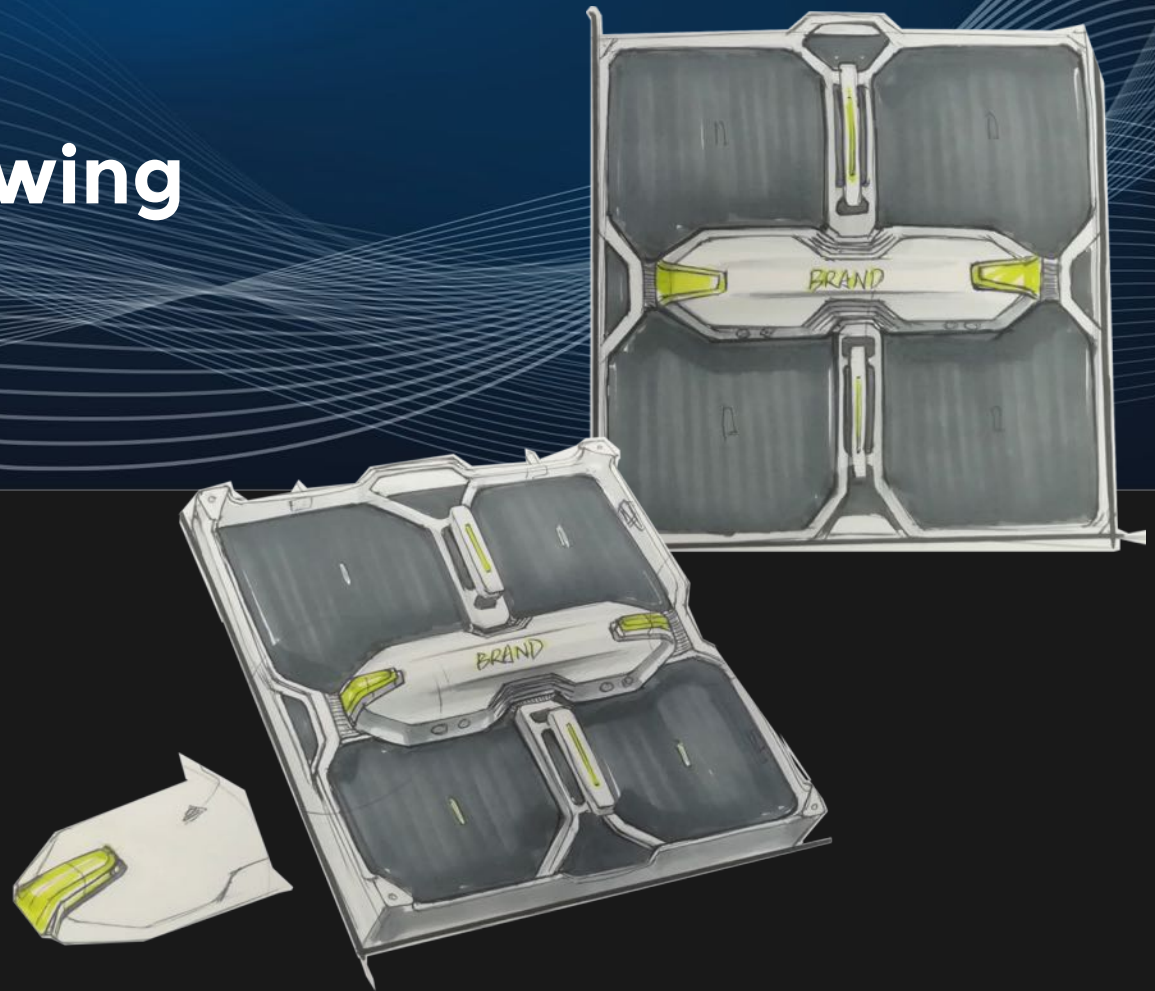


**THINK
OUTSIDE
THE
BOX**

Texture Nimble Professional Flat Handy



START
from the drawing







2.6 mm

SMD1515 black LED.



2.9 mm

SMD1515 black LED.



3.9 mm

SMD2020 black LED.

Indoor models



2.9 mm

SMD1515 black LED.



3.9 mm

SMD1921 black LED.

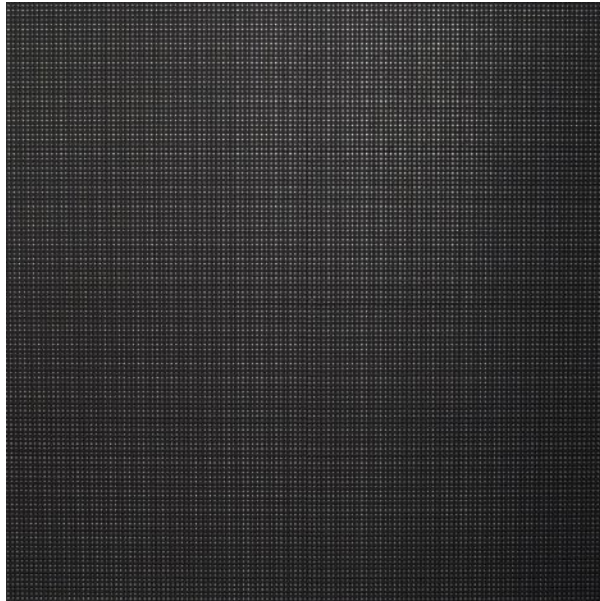


4.8 mm

SMD1921 black LED.

Outdoor models

500mm



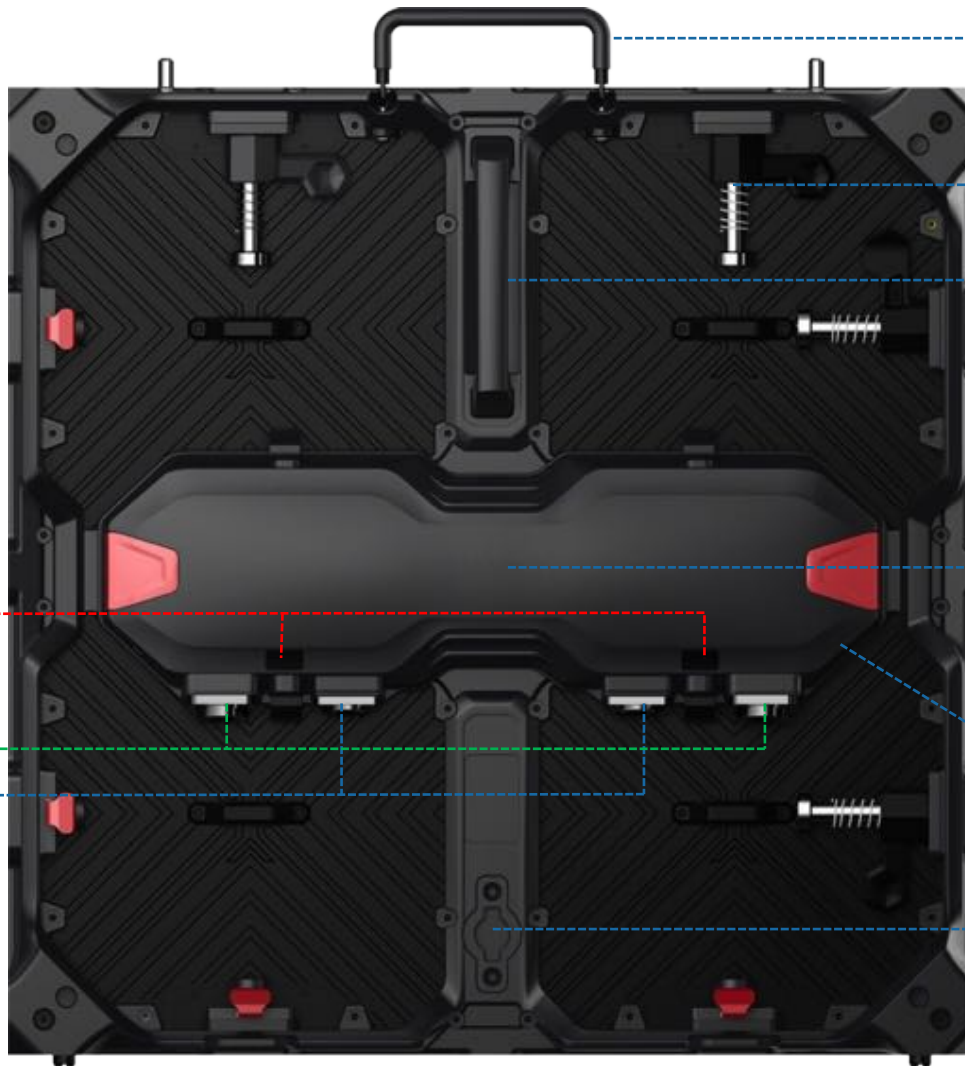
Weight: 7.1kg indoor / 7.5kg outdoor



80mm



500mm



Lifting Handle

Fast locks

Panel Handle

*Removable
Power & Receiving box*

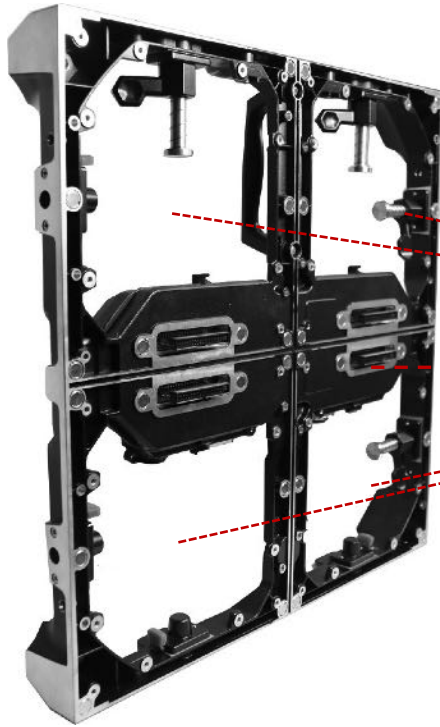
Hidden testing button

Stack installation joggle

Power & signal indicator

Power connector

Signal connector



■ **Compatible LED module**

- Different pixel pitches
- Indoor & outdoor
- No up-down direction

■ **Quick removable**

- Power & Receiving box & hub board & connectors

■ **Compatible**

- For different pixel pitches
- For indoor & outdoor

2.6mm



2.9mm



3.9mm



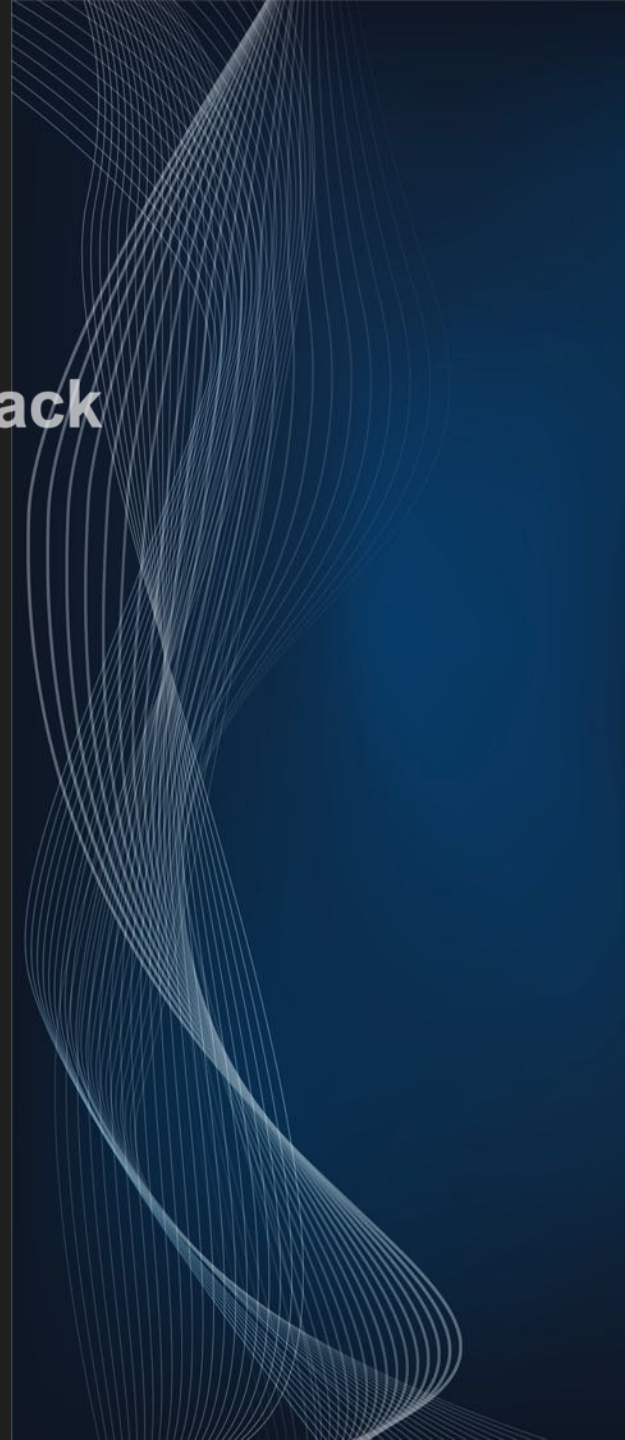
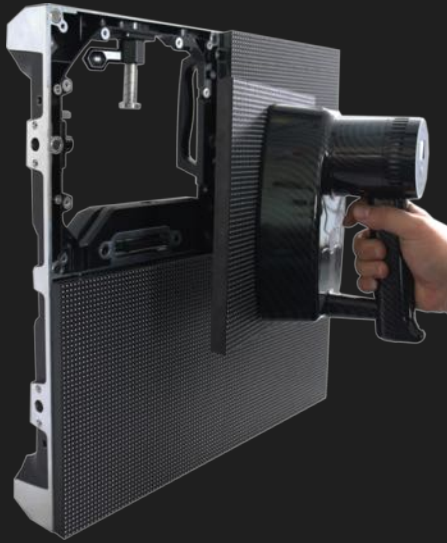
4.8mm



Versatile Power Box

fit all pixel pitch

Magnetic front & back Maintenance





■ *Magnetic front service or Back service with screw*

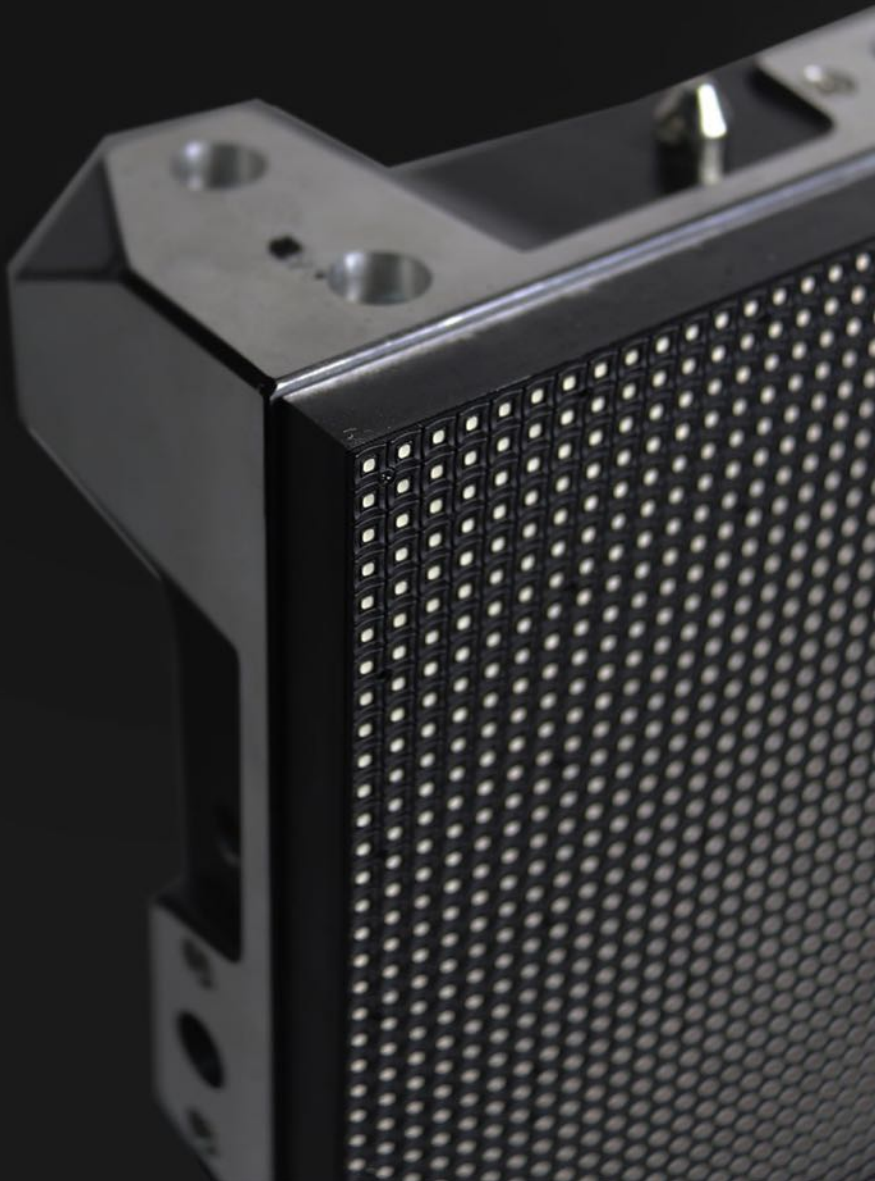


■ *Strengthen handle*

□ *Strong installation pins, metal material optional*



- ✓ *Black LED, high contrast ratio*
- ✓ *High refresh rate, no ghosting*
- ✓ *Calibration memory in LED module*
- ✓ *No AB module(no up and down direction installation)*
- ✓ *Superb visual quality, zero-gap alignment*
- ✓ *Superb surface flatness*
- ✓ *Perfect alignment no gaps*
- ✓ *Magnetic front service (Screw optional)*
- ✓ *Strong magnetics*
- ✓ *Strengthen housing structure design, no deformation*
- ✓ *Optimized heat sinking design*
- ✓ *Anti fire / corrosion / ultra-violet material*



- *Mask with screws*
- *Convex surface*
- *No deformation*
- *Strengthen edges*

- *High uniformity*
- *High contrast ratio*
- *Superb flatness*
- *Superb alignment*

- *Big viewing angle*
- *Anti-collision protection for LEDs*

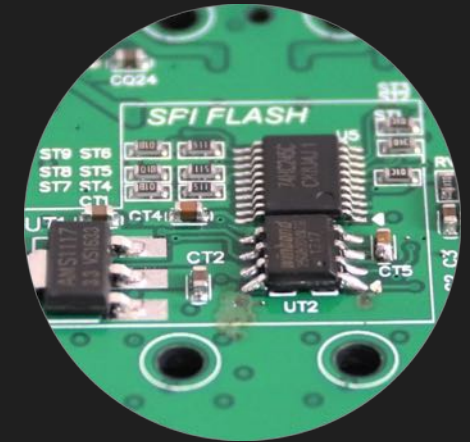
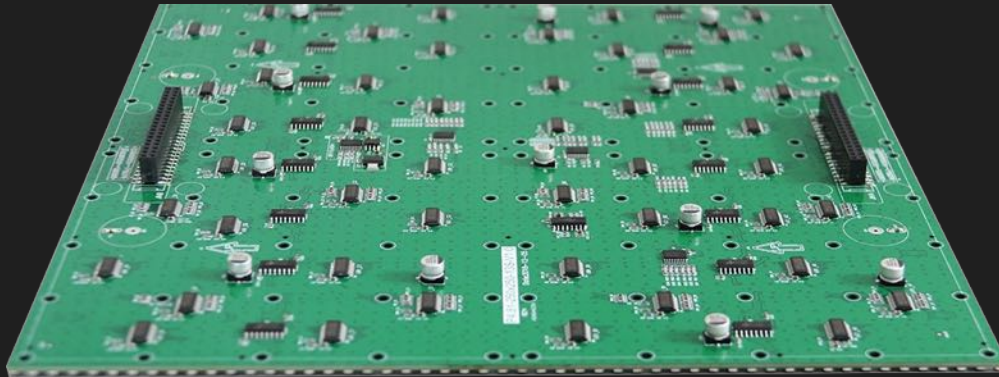


Single Person Installation



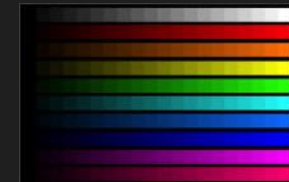
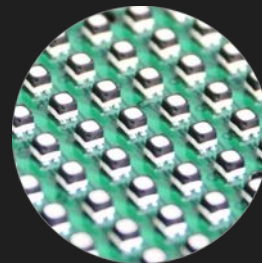
Human Engineering Design





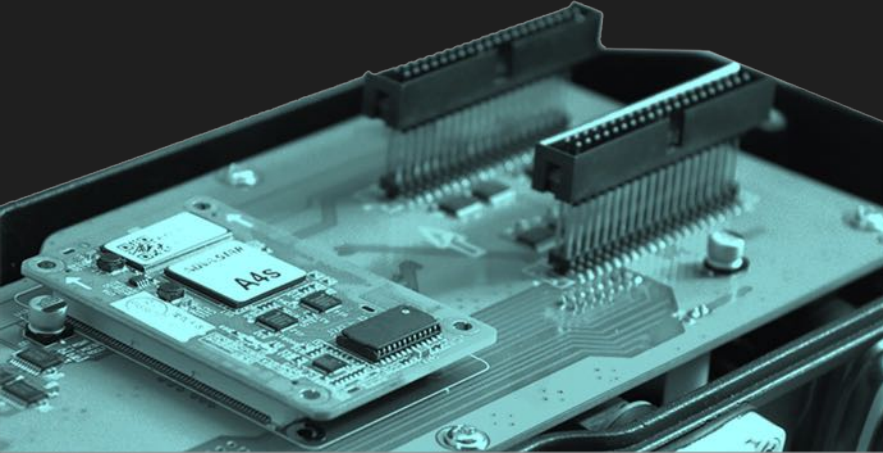
Calibration memo in LED module

- ✓ *Optimized PCB board design*
- ✓ *4 layers PCB*
- ✓ *Calibration-memo in PCB board*
- ✓ *Perfect matched with Novastar control system*
- ✓ *Perfect heat sinking*
- ✓ *CE / EMC certified optional*



Calibration

Control Power Box



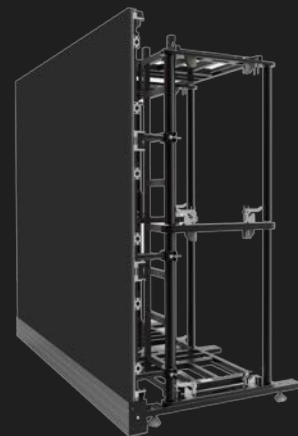
- ✓ *Power supply with certificated*
- ✓ *Novastar receiving card*
- ✓ *Universe hub board for different pixel pitches*
- ✓ *No cable connection for power supply & hub board*
- ✓ *Good quality connector pins*
- ✓ *Optimized heat sinking design*
- ✓ *Big size indicator, visible under sunshine*
- ✓ *Direct signal connection to hub(receiving card) optional*
- ✓ *Quick removable without any tools optional*
- ✓ *Customized color sign*
- ✓ *Neutrik connectors optional*
- ✓ *Hidden testing button avoid false touch*



Hanging Installation



Ground installation



Accessories



Hanging bar



Clip



Bridge



Bridge



Footer

Accessories



Flight case



Dolly



Power cable



Power cable



Vacuum suction tool



Concave & convex installation



Features

Matrix 2.6mm xR Version

Equipped with Brompton R2 receiving card

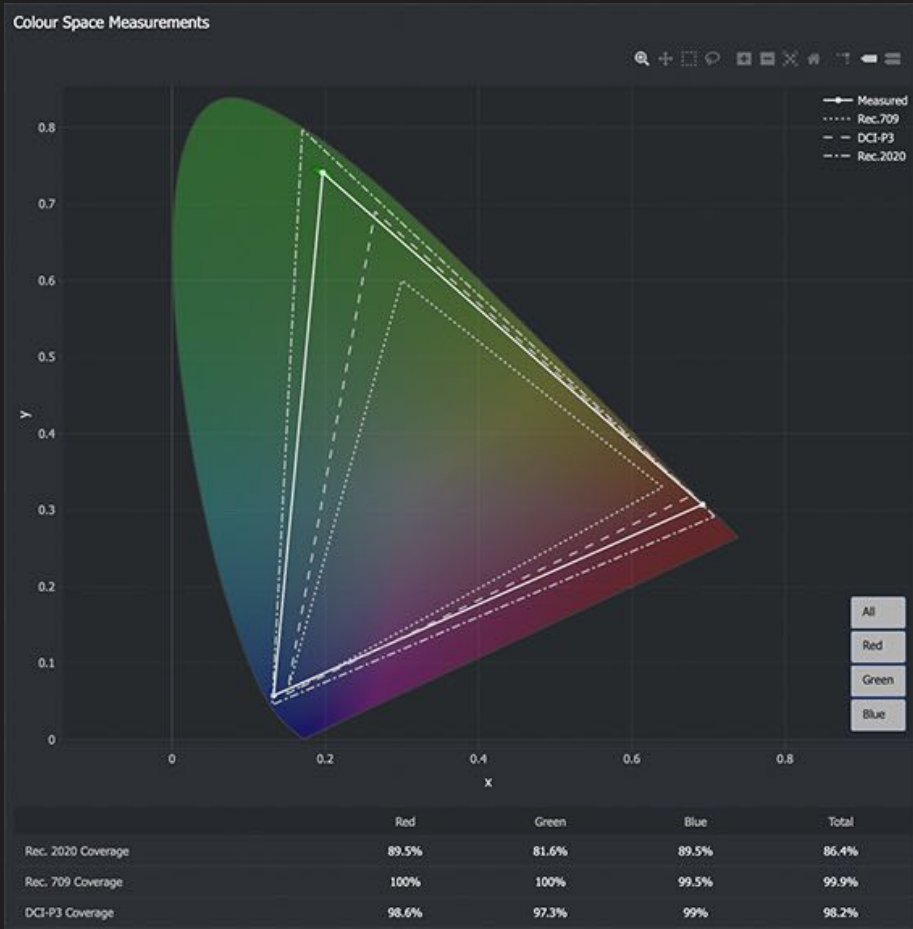
1000-1600 nits brightness with HDR technology

7680Hz super high refresh rate, 18 bits grayscale

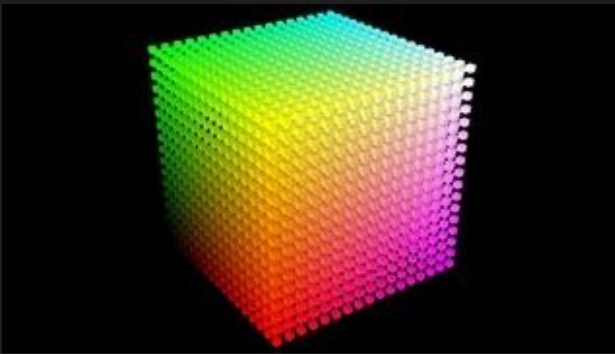
Match standards of DCI-P3, BT.2020, Rec.709

HDR, Frame remapping, Ultra low latency, Shuttersync

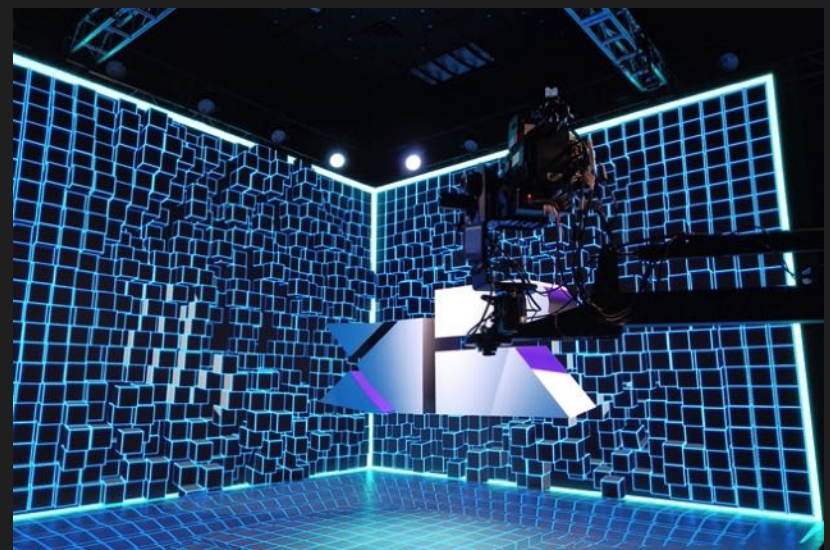
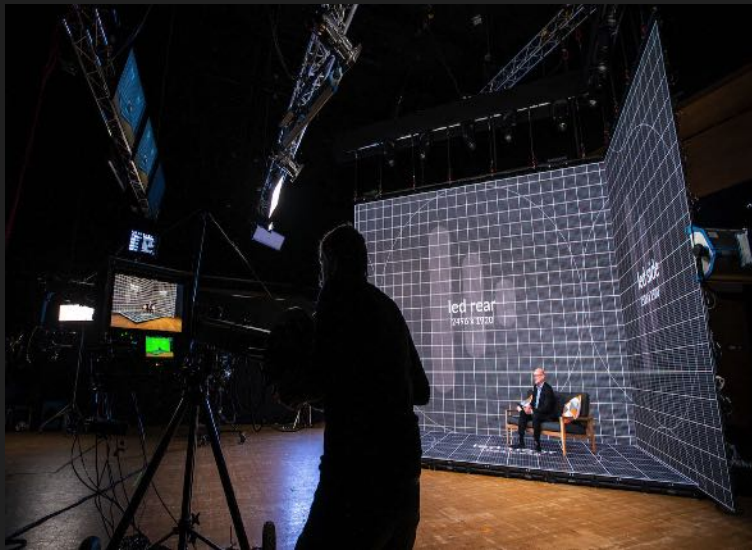




Color measurement

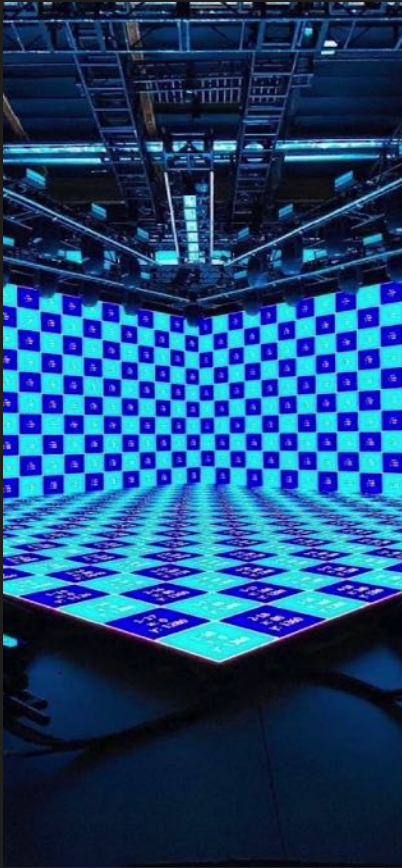


xR Application





xR LED wall solutions



xR stage



Events



Film-making



Broadcasting



Events



Outdoor Shows



Conference



Advertising

Project Galleries



Specification

xR Version

Pixel pitch	2.6mm(Novastar A10s)	2.6mm (Brompton R2)	2.6mm(Brompton R2)
LED configuration	SMD1515	SMD1515	SMD1515
Brightness	1200 nits	1000 nits	1600 nits
Viewing angle	160°/ 160° (50% brightness)		
Scan mode	1/16 or 1/24	1/16	1/8
Refresh rate	3840/7680Hz		
Processing	14/16/18 bits		
Module size	250mm x 250mm x 17mm (W x H x D)	9.84'' x 9.84'' x 0.67'' (W x H x D)	
Panel size	500mm x 500mm x 78mm (W x H x D)	19.69'' x 19.69'' x 3.07'' (W x H x D)	
Panel weight	7.3kg / 16.09lbs	7.3kg / 16.09 lbs	7.3kg / 16.09lbs
Input voltage	AC100~240V 50/60 HZ		
Power consumption (Avg)	200W/sqm	200W/sqm	200W/sqm
Power consumption (Max)	640W/sqm	640W/sqm	640W/sqm
Working temperature	-20°C~60°C		
IP rating	IP31/IP31		
Life span	100,000 hrs		
Warranty	24 months		

Specification

Indoor models

Pixel pitch	2.6mm	2.9mm	3.9mm
LED configuration	SMD1515	SMD1515	SMD2020
Brightness	1200 nits	1000 nits	1200 nits
Viewing angle	160°/ 160° (50% brightness)		
Scan mode	1/16 or 1/24	1/28	1/16
Refresh rate	1920/3840/7680Hz		
Processing	4/16 bits		
Module size	250mm x 250mm x 17mm (W x H x D)	9.84'' x 9.84'' x 0.67'' (W x H x D)	
Panel size	500mm x 500mm x 78mm (W x H x D)	19.69'' x 19.69'' x 3.07'' (W x H x D)	
Panel weight	7.3kg / 16.09lbs	7.3kg / 16.09 lbs	7.1kg / 15.65lbs
Input voltage	AC100~240V 50/60 HZ		
Power consumption (Avg)	200W/sqm	200W/sqm	200W/sqm
Power consumption (Max)	640W/sqm	640W/sqm	680W/sqm
Working temperature	-20°C~60°C		
IP rating	IP31/IP31		
Life span	100,000 hrs		
Warranty	24 months		

Specification

Outdoor models

Pixel pitch	2.9mm	3.9mm	4.8mm
LED configuration	SMD1415(Outdoor)	SMD1921/SMD1820	SMD1921/SMD1820
Brightness	4200 nits	4000 nits	4000nits
Viewing angle	160°/ 160° (50% brightness)		
Scan mode	1/21	1/16	1/13
Refresh rate	1920/3840Hz		
Processing	14 bits		
Module size	250mm x 250mm x 17mm (W x H x D)	9.84'' x 9.84'' x 0.67'' (W x H x D)	
Panel size	500mm x 500mm x 78mm (W x H x D)	19.69'' x 19.69'' x 3.07'' (W x H x D)	
Panel weight	7.8kg / 17.19lbs	7.8kg / 17.19 lbs	7.7kg / 16.97lbs
Input voltage	AC100~240V 50/60 HZ		
Power consumption (Avg)	200W/sqm	200W/sqm	200W/sqm
Power consumption (Max)	640W/sqm	640W/sqm	680W/sqm
Working temperature	-20°C~60°C		
IP rating	IP65/IP65		
Life span	100,000 hrs		
Warranty	24 months		

LUCERE DISPLAYS

Service

Customer' value is our top priority



Free inquiry with solutions

We will quote for any inquiry within 24 hours with quotations & specifications



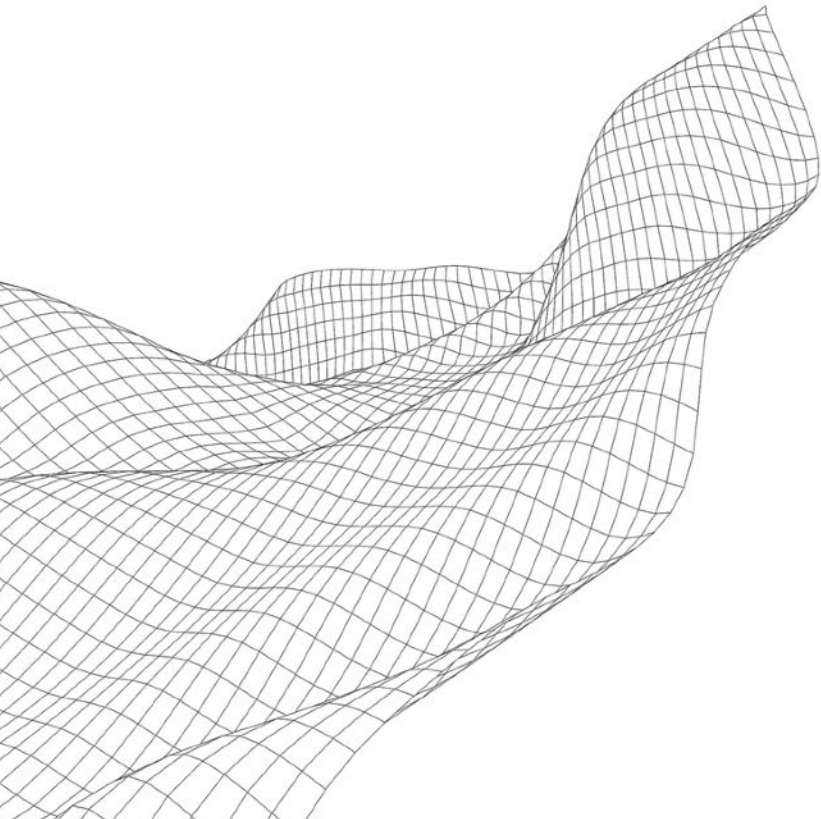
Free drawing

Free drawing of structure, signal & power cable connection, customized solutions if needed



7/24 online technical support

Sales technical supports are ready anytime within warranty



Contact



Locations

*Philadelphia / Las Vegas / Nashville / Phoenix / Atlanta /
Orlando / Dallas*



Tel: 855 MY DISPLAY

855 693 4775



Email: info@luceredisplays.net